

+NOTICE!!

These documents have been scanned!

Do not place un-scanned documents beneath this notice!

Do not remove this notice from this file!

GPO Jacket No. 560-102
Print Order 61549
Rise Business Services, LLC
Job=AZ15 1/8/2020



Box Number= AZ15283



Claim Begin-End: AMC457998-AMC458029

1 Initial Receipt



AZ15283-40

AMC458525-AMC458783

United States Department of the Interior
Bureau of Land Management
 DIV OF LANDS, MINRLS & ENERGY
 ONE N CENTRAL AVE
 PHOENIX, AZ 85004 -4427
 Phone: 602-417-9200

Receipt	
No:	4589434

Transaction #: 4711148	
Date of Transaction: 10/22/2019	
CUSTOMER:	
	RESOLUTION COPPER MINING LLC PO BOX 1944 SUPERIOR, AZ 85173-1944 US

LINE #	QTY	DESCRIPTION	REMARKS	UNIT PRICE	TOTAL
1	32.00	LOCATABLE MINERALS / MINING CLAIMS- NEW, UNADJUD, ONE OR MORE AUTH NOS / NEW MINING CLAIM PROCESSING FEE CASES: AMC457998/\$20.00, AMC457999/\$20.00, AMC458000/\$20.00, AMC458001/\$20.00, AMC458002/\$20.00, AMC458003/\$20.00, AMC458004/\$20.00, AMC458005/\$20.00, AMC458006/\$20.00, AMC458007/\$20.00, AMC458008/\$20.00, AMC458009/\$20.00, AMC458010/\$20.00, AMC458011/\$20.00, AMC458012/\$20.00, AMC458013/\$20.00, AMC458014/\$20.00, AMC458015/\$20.00, AMC458016/\$20.00, AMC458017/\$20.00, AMC458018/\$20.00, AMC458019/\$20.00, AMC458020/\$20.00, AMC458021/\$20.00, AMC458022/\$20.00, AMC458023/\$20.00, AMC458024/\$20.00, AMC458025/\$20.00, AMC458026/\$20.00, AMC458027/\$20.00, AMC458028/\$20.00, AMC458029/\$20.00		- n/a -	640.00
2	32.00	LOCATABLE MINERALS / MINING CLAIMS- NEW, UNADJUD, ONE OR MORE AUTH NOS / NEW MINING CLAIMS LOCATION FEE CASES: AMC457998/\$40.00, AMC457999/\$40.00, AMC458000/\$40.00, AMC458001/\$40.00, AMC458002/\$40.00, AMC458003/\$40.00, AMC458004/\$40.00, AMC458005/\$40.00, AMC458006/\$40.00, AMC458007/\$40.00, AMC458008/\$40.00, AMC458009/\$40.00, AMC458010/\$40.00, AMC458011/\$40.00,		- n/a -	1280.00

		AMC458012/\$40.00, AMC458013/\$40.00, AMC458014/\$40.00, AMC458015/\$40.00, AMC458016/\$40.00, AMC458017/\$40.00, AMC458018/\$40.00, AMC458019/\$40.00, AMC458020/\$40.00, AMC458021/\$40.00, AMC458022/\$40.00, AMC458023/\$40.00, AMC458024/\$40.00, AMC458025/\$40.00, AMC458026/\$40.00, AMC458027/\$40.00, AMC458028/\$40.00, AMC458029/\$40.00			
3	32.00	LOCATABLE MINERALS / MINING CLAIMS- NEW, UNADJUD, ONE OR MORE AUTH NOS / NEW MINING CLAIMS MAINTENANCE FEE CASES: AMC457998/\$165.00, AMC457999/\$165.00, AMC458000/\$165.00, AMC458001/\$165.00, AMC458002/\$165.00, AMC458003/\$165.00, AMC458004/\$165.00, AMC458005/\$165.00, AMC458006/\$165.00, AMC458007/\$165.00, AMC458008/\$165.00, AMC458009/\$165.00, AMC458010/\$165.00, AMC458011/\$165.00, AMC458012/\$165.00, AMC458013/\$165.00, AMC458014/\$165.00, AMC458015/\$165.00, AMC458016/\$165.00, AMC458017/\$165.00, AMC458018/\$165.00, AMC458019/\$165.00, AMC458020/\$165.00, AMC458021/\$165.00, AMC458022/\$165.00, AMC458023/\$165.00, AMC458024/\$165.00, AMC458025/\$165.00, AMC458026/\$165.00, AMC458027/\$165.00, AMC458028/\$165.00, AMC458029/\$165.00		- n/a -	5280.00
TOTAL:					\$7,200.00

PAYMENT INFORMATION				
1	AMOUNT:	7200.00	POSTMARKED:	N/A
	TYPE:	CHECK	RECEIVED:	10/22/2019
	CHECK NO:	0080002345		
	NAME:	RESOLUTION COPPER MINING LLC 4700 S DAYBREAK PRKWY SOUTH JORDAN UT 84095 US		

REMARKS

This receipt was generated by the automated BLM Collections and Billing System and is a paper representation of a portion of the official electronic record contained therein.

NOTICE!!

These documents have been scanned!

Do not place un-scanned documents beneath this notice!

Do not remove this notice from this file!

GPO Jacket No. 560-102
Print Order 61549
Rise Business Services, LLC
Job=AZ15 1/8/2020



Box Number= AZ15283



Claim Begin-End: AMC457998-AMC458029

2 Correspondence



AZ15283-40

AMC458525-AMC458783

**NO
DOCUMENTS
FOUND**

NO DOCUMENTS FOUND
NO DOCUMENTS FOUND

NOTICE!!

These documents have been scanned!

Do not place un-scanned documents beneath this notice!

Do not remove this notice from this file!

GPO Jacket No. 560-102
Print Order 61549
Rise Business Services, LLC
Job=AZ15 1/8/2020



Box Number= AZ15283



Claim Begin-End: AMC457998-AMC458029

3 Transfers



AZ15283-40

AMC458525-AMC458783

**NO
DOCUMENTS
FOUND**

NO DOCUMENTS FOUND
NO DOCUMENTS FOUND

NOTICE!!

These documents have been scanned!

Do not place un-scanned documents beneath this notice!

Do not remove this notice from this file!

GPO Jacket No. 560-102
Print Order 61549
Rise Business Services, LLC
Job=AZ15 1/8/2020



Box Number= AZ15283



Claim Begin-End: AMC457998-AMC458029

4 Annual Filings



AZ15283-40

AMC458525-AMC458783

**NO
DOCUMENTS
FOUND**

NO DOCUMENTS FOUND
NO DOCUMENTS FOUND

NOTICE!!

These documents have been scanned!

Do not place un-scanned documents beneath this notice!

Do not remove this notice from this file!

GPO Jacket No. 560-102
Print Order 61549
Rise Business Services, LLC
Job=AZ15 1/8/2020



Box Number= AZ15283



Claim Begin-End: AMC457998-AMC458029

5 Miscellaneous



AZ15283-40

AMC458525-AMC458783

**NO
DOCUMENTS
FOUND**

NO DOCUMENTS FOUND
NO DOCUMENTS FOUND

NOTICE!!

These documents have been scanned!

Do not place un-scanned documents beneath this notice!

Do not remove this notice from this file!

GPO Jacket No. 560-102
Print Order 61549
Rise Business Services, LLC
Job=AZ15 1/8/2020



Box Number= AZ15283



Claim Begin-End: AMC457998-AMC458029

6 Location Notices-Amendments and Supporting Documents



AZ15283-40

AMC458525-AMC458783

MINING CLAIM STATUS REPORT - Assessment Year 2020

Data Entered: 11/12/19 Ram

MTP Checked By: printed
GEO Checked By: printed

LEAD SERIAL NUMBER: AMC 457998 thru AMC 458029

NUMBER OF CLAIMS & TYPE:

32 LODGE
____ PLACER
____ ASSOCIATION PLACER
____ MILL SITE
____ TUNNEL SITE

CHARGES:

Processing Fee @ \$20 = \$ 640
Location Fee @ \$40 = \$ 1,280
Maintenance Fee @ \$165 = \$ 5,280
Add'l Maint Fee for Assoc Placer = \$ _____
SUBTOTAL \$ _____
Other Fees \$ _____
Other Fees \$ _____
TOTAL \$ 7,200

TOTAL ACREAGE: _____ Per Claim
(Placer Only)

NUMBER OF LOCATORS: _____

DOCUMENTS RECEIVED VIA : Over-the-Counter [] Mail [] **TIMELY FILED:** Yes [] No []

LEGAL DESCRIPTION: T 25 R 14E SEC 20
T _____ R _____ SEC _____
T _____ R _____ SEC _____
T _____ R _____ SEC _____
T _____ R _____ SEC _____

BLM [] FOREST SERVICE [] _____ SUBJ TO PL 359: Yes [] No []
WILDERNESS AREA [] _____

SPLIT ESTATE: N/A [] SX [] PX [] OTHER [] _____
SRHA [] Was proper Notice filed if located on SHRA Land? Yes [] No []

RECONVEYED MINERALS ON BLM LAND REQUIRE OPENING ORDER FROM 1944 TO 1993:

Open to Entry On _____ N/A []

COMMENTS/STATUS: VOID [] PARTIALLY VOID [] PVT MINERALS [] WITHDRAWN LANDS []
OTHER [] _____

mining claims dropped off

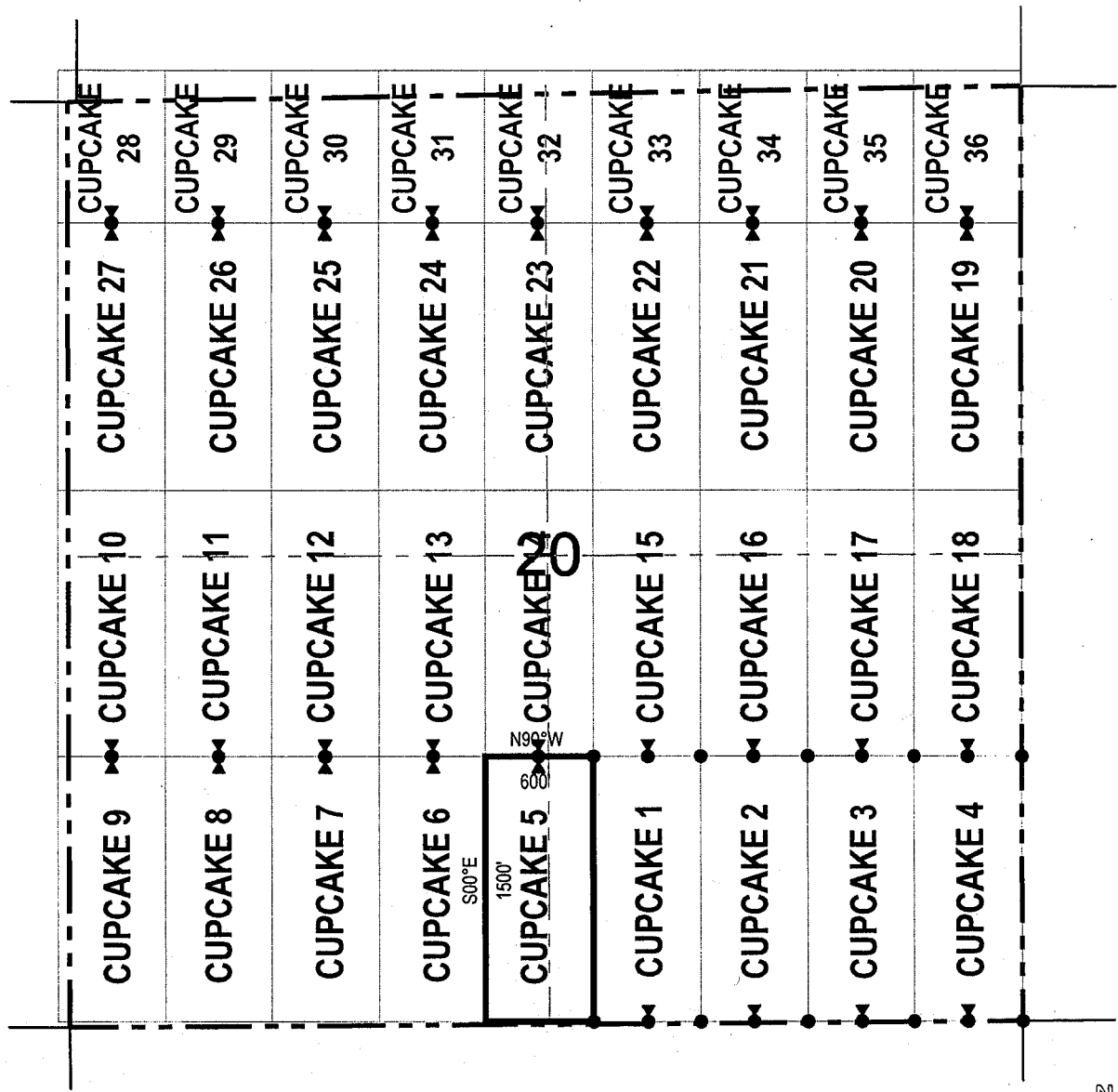
[] Claimant acknowledges that portions of the following claim(s) site(s) may be void or voidable.

Printed Name of Claimant _____ Signature of Claimant _____

*****FINAL ADJUDICATION*****

DATE _____ INITIALS _____

LODE CLAIM LOCATION MAP

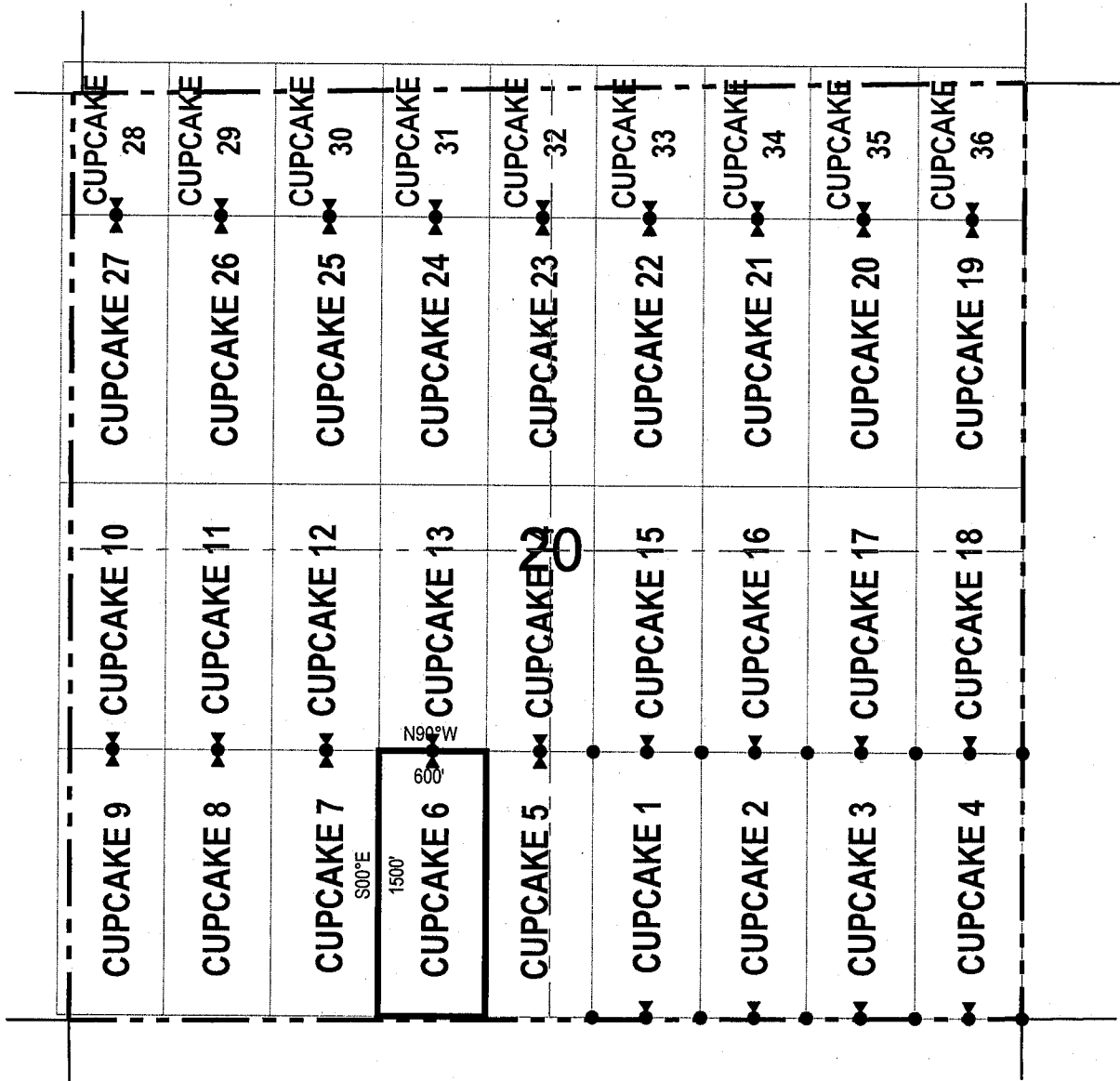


● Corner Posts ▲ Location Monuments Scale: 1"=1000'



1. The above map depicts the **CUPCAKE 5** Lode Claim, NE 1/4 and SE 1/4 of the SW 1/4 and NW 1/4 and SW 1/4 of the SE 1/4 Section 20, Township 2 South, Range 14 East, Gila & Salt River Base and Meridian, Gila County, Arizona, Mineral Creek Mining District.
2. The type of corner and location monuments used are wood 2"x2"x48" posts and metal tags with location information written thereon.
3. The bearings and distances in degrees and feet between claim corners are as depicted on the above map.

LODE CLAIM LOCATION MAP

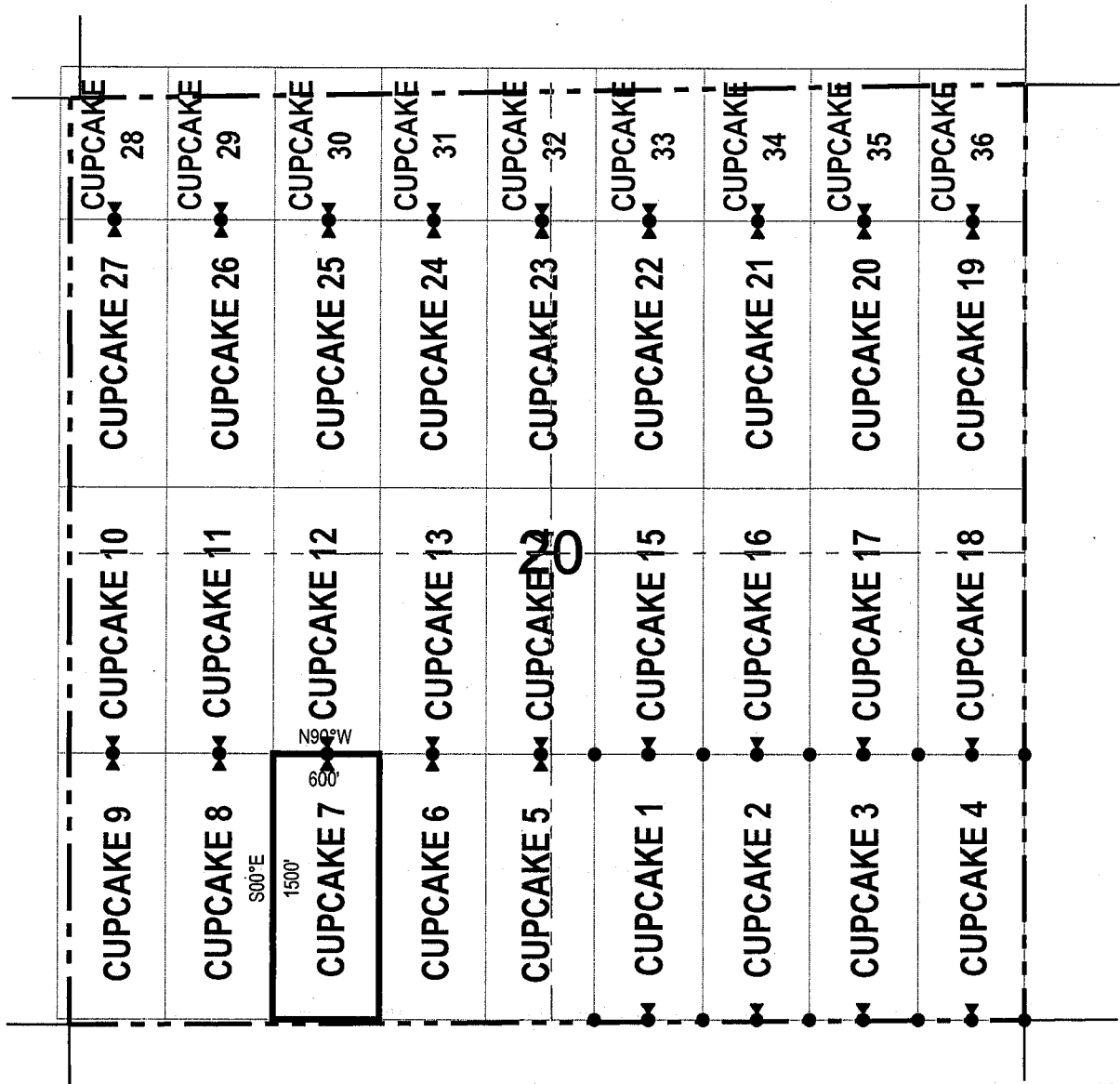


● Corner Posts ▲ Location Monuments Scale: 1"=1000'



1. The above map depicts the **CUPCAKE 6** Lode Claim, NE 1/4 and SE 1/4 of the SW 1/4 of Section 20, Township 2 South, Range 14 East, Gila & Salt River Base and Meridian, Gila County, Arizona, Mineral Creek Mining District.
2. The type of corner and location monuments used are wood 2"x2"x48" posts and metal tags with location information written thereon.
3. The bearings and distances in degrees and feet between claim corners are as depicted on the above map.

LODE CLAIM LOCATION MAP

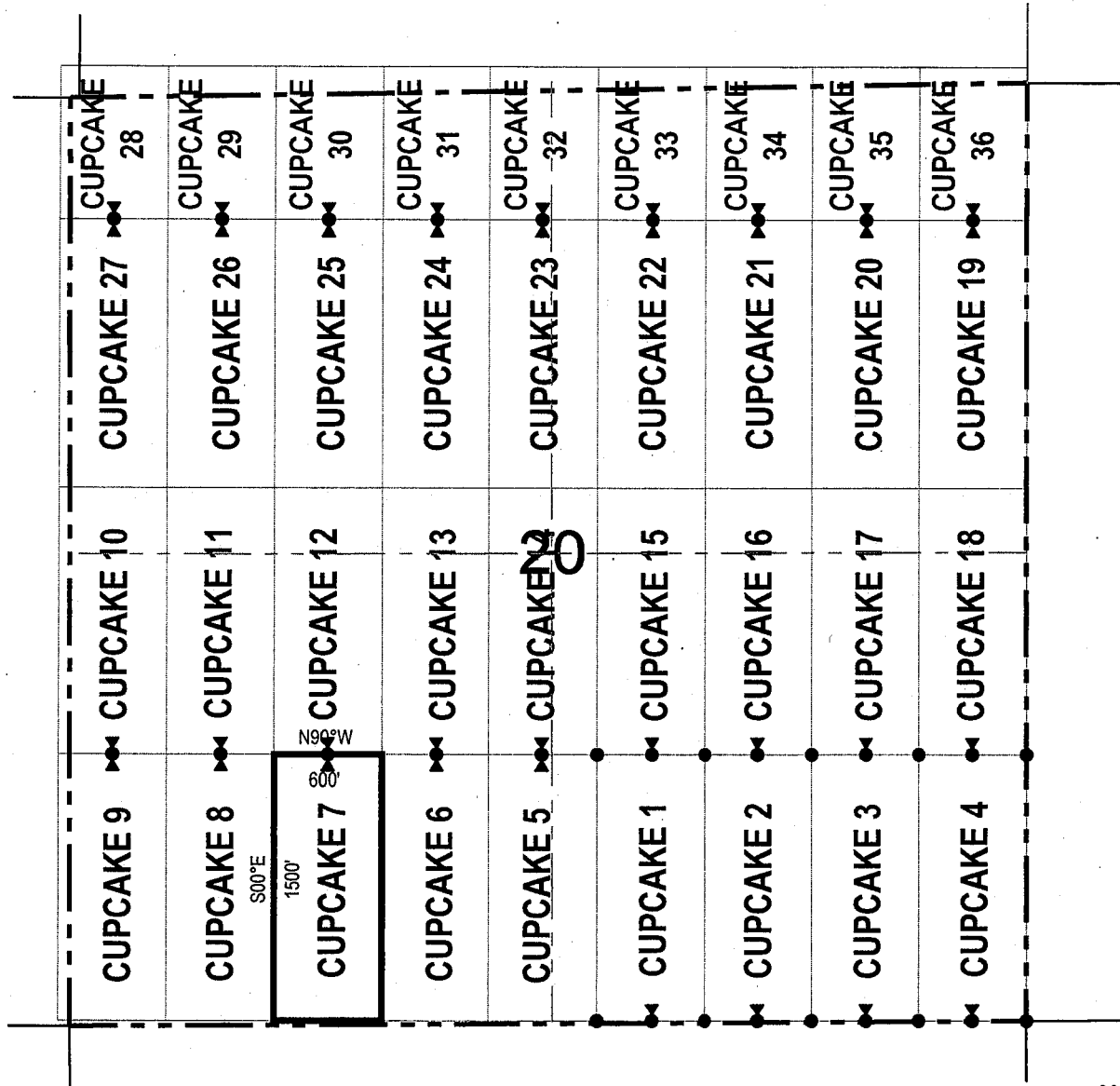


● Corner Posts ▲ Location Monuments Scale: 1"=1000'



1. The above map depicts the **CUPCAKE 7** Lode Claim, NE 1/4, NW 1/4, SW 1/4 and SE 1/4 of the SW 1/4 of Section 20, Township 2 South, Range 14 East, Gila & Salt River Base and Meridian, Gila County, Arizona, Mineral Creek Mining District.
2. The type of corner and location monuments used are wood 2"x2"x48" posts and metal tags with location information written thereon.
3. The bearings and distances in degrees and feet between claim corners are as depicted on the above map.

LODE CLAIM LOCATION MAP

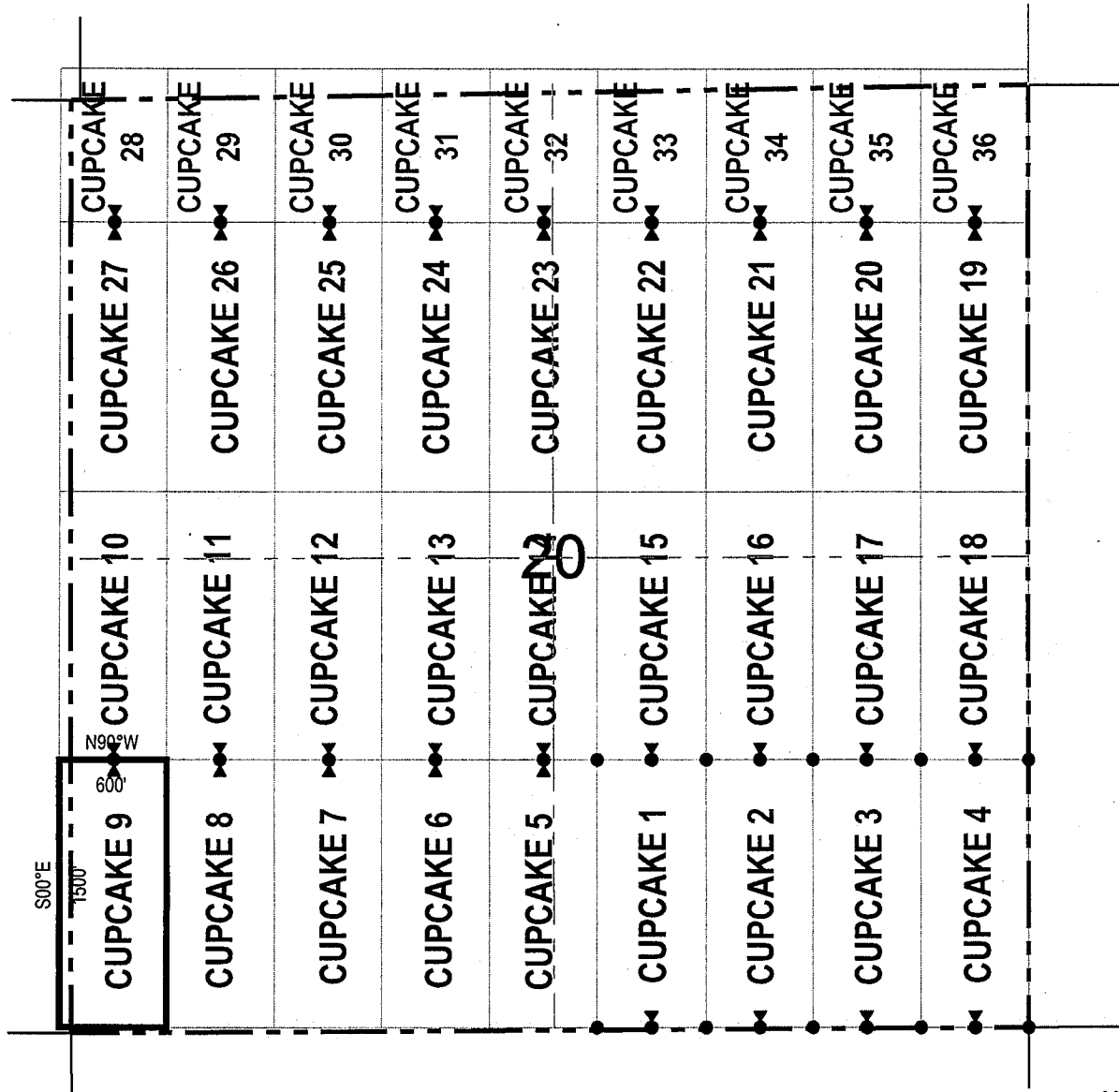


● Corner Posts ▲ Location Monuments Scale: 1"=1000'



1. The above map depicts the **CUPCAKE 8** Lode Claim, NW 1/4 and SW 1/4 of the SW 1/4 of Section 20, Township 2 South, Range 14 East, Gila & Salt River Base and Meridian, Gila County, Arizona, Mineral Creek Mining District.
2. The type of corner and location monuments used are wood 2"x2"x48" posts and metal tags with location information written thereon.
3. The bearings and distances in degrees and feet between claim corners are as depicted on the above map.

LODE CLAIM LOCATION MAP



● Corner Posts ▲ Location Monuments Scale: 1"=1000'



1. The above map depicts the **CUPCAKE 9** Lode Claim, NW 1/4 and SW 1/4 of the SW 1/4 of Section 20, Township 2 South, Range 14 East, Gila & Salt River Base and Meridian, Gila County, Arizona, Mineral Creek Mining District.
2. The type of corner and location monuments used are wood 2"x2"x48" posts and metal tags with location information written thereon.
3. The bearings and distances in degrees and feet between claim corners are as depicted on the above map.

When recorded return to:
 Resolution Copper Mining LLC
 P.O. Box 1944
 Superior, AZ 85723

LOCATION NOTICE FOR LODE MINING CLAIM


NOTICE IS HEREBY GIVEN that the CUPCAKE 10
 _____ lode mining claim has been located
 by Resolution Copper Mining LLC whose current mailing
 address is P.O. Box 1944
Superior AZ 85273

RECORDED
 BLM/AZ STATE OFFICE
 PHOENIX, ARIZONA
 2019 OCT 22 A 11: 51

The general course of this claim is north / south and it is situated in Gila
 County, Arizona. This claim is 1500 feet in length and 600 feet in width. This claim runs
 from the location monument on which this location notice is posted approximately 1490 feet in a
northerly direction to the north end line and 10 feet in a southerly direction to the
south end line. This claim is marked by six monuments, one at each corner and one at the center of each
 end line of the claim.

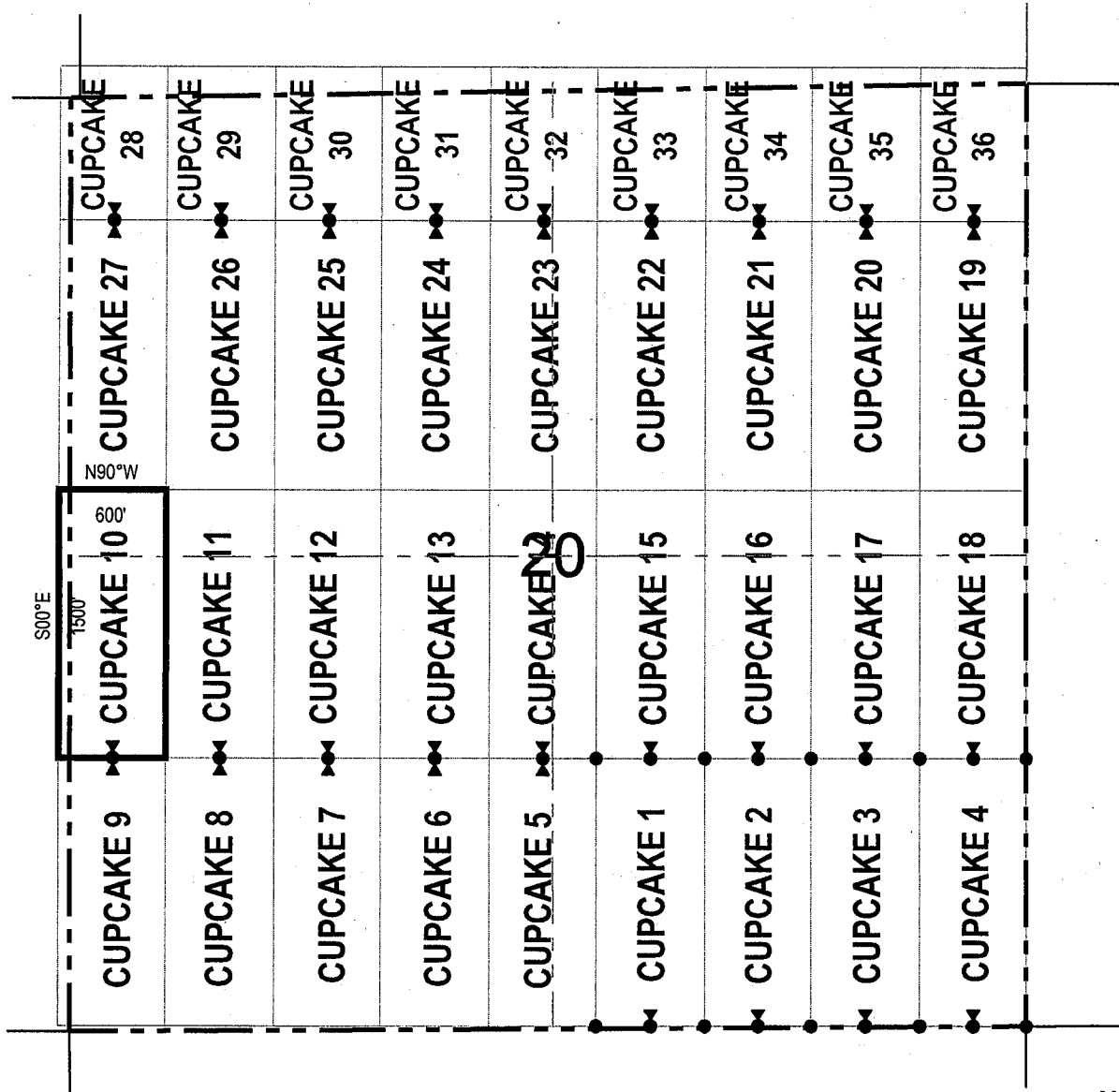
The location monument on which this notice is posted is situated within Section 20, Township 2
South, Range 14 East, Gila Salt River Base and Meridian, Arizona and this claim encompasses portions
 of the following quarter section (s), section (s), Township (s) and Range (s) NW 1/4 of the SW 1/4 and SW 1/4 of
the NW 1/4 of Section 20, Township 2 South, Range 14 East, Gila & Salt River Base and Meridian, Gila County, Arizona,
Mineral Creek Mining District.

The locality of this claim with reference to some natural object or permanent monument and additional information
 (if any) concerning its locality are as follows: 3000 feet north and 4800 feet west of the southeast corner of
Section 20, Township 2 South, Range 14 East, to the northeast corner of the claim.

DATED AND POSTED on the ground this 17 day of September, 2019
 LOCATOR (s) Resolution Copper Mining LLC AGENT: T. Robert Breen 
P.O. Box 1944
Superior, Arizona 85273

AMC458003

LODE CLAIM LOCATION MAP

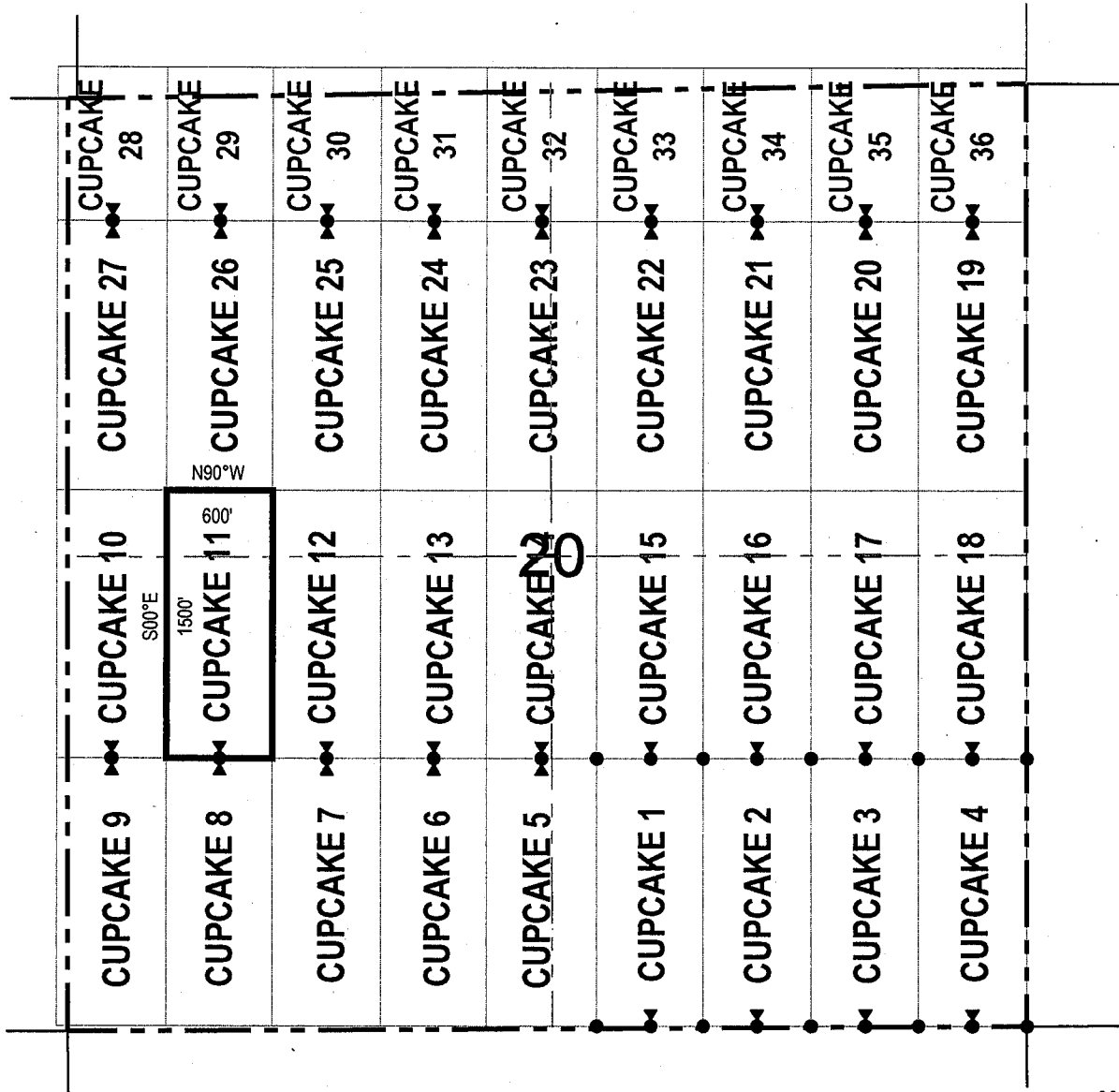


● Corner Posts ▲ Location Monuments Scale: 1"=1000'



1. The above map depicts the **CUPCAKE 10** Lode Claim, NW 1/4 of the SW 1/4 and SW 1/4 of the NW 1/4 of Section 20, Township 2 South, Range 14 East, Gila & Salt River Base and Meridian, Gila County, Arizona, Mineral Creek Mining District.
2. The type of corner and location monuments used are wood 2"x2"x48" posts and metal tags with location information written thereon.
3. The bearings and distances in degrees and feet between claim corners are as depicted on the above map.

LODE CLAIM LOCATION MAP

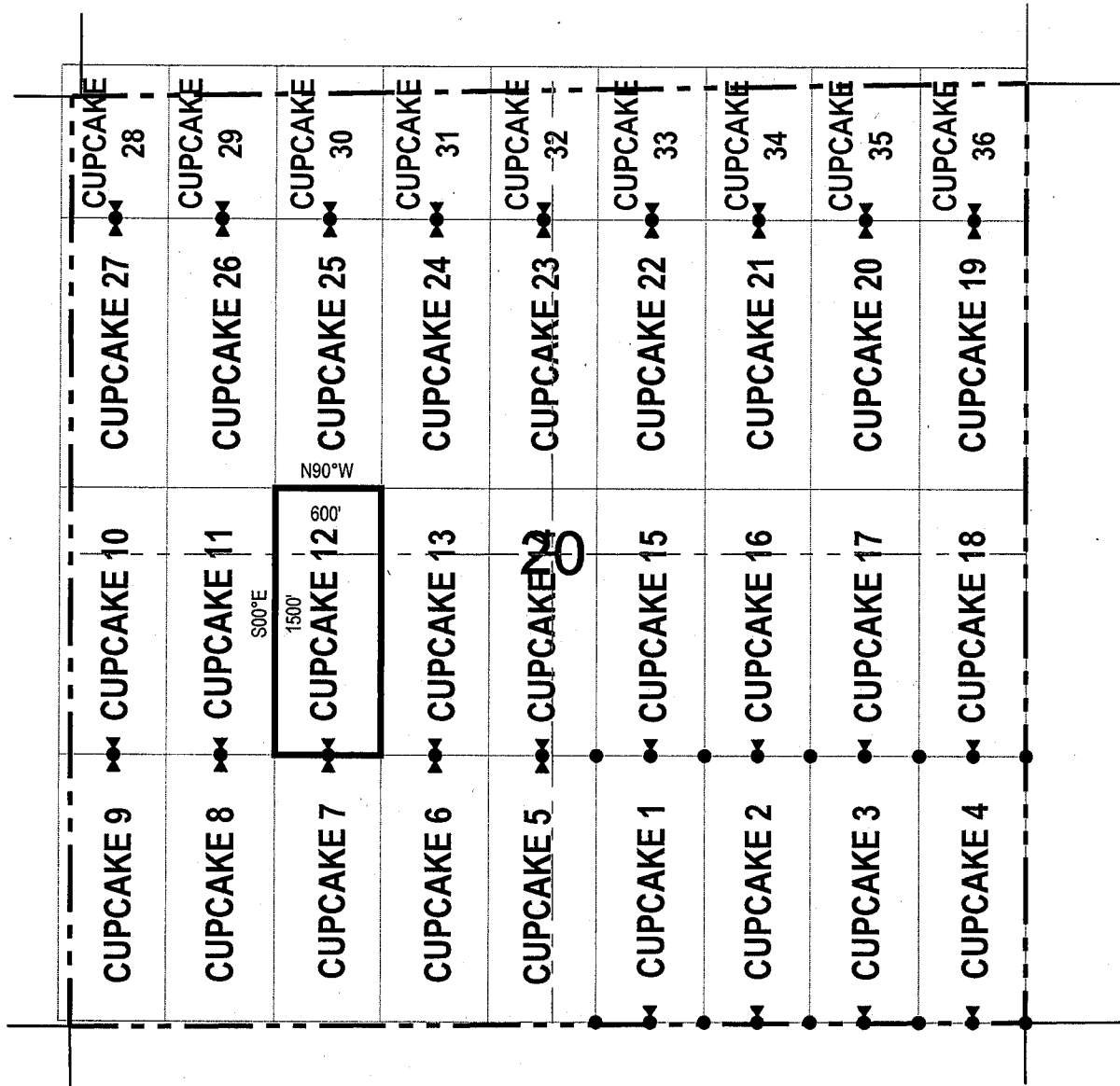


● Corner Posts ▲ Location Monuments Scale: 1"=1000'



1. The above map depicts the **CUPCAKE 11** Lode Claim, NW 1/4 of the SW 1/4 and SW 1/4 of the NW 1/4 of Section 20, Township 2 South, Range 14 East, Gila & Salt River Base and Meridian, Gila County, Arizona, Mineral Creek Mining District.
2. The type of corner and location monuments used are wood 2"x2"x48" posts and metal tags with location information written thereon.
3. The bearings and distances in degrees and feet between claim corners are as depicted on the above map.

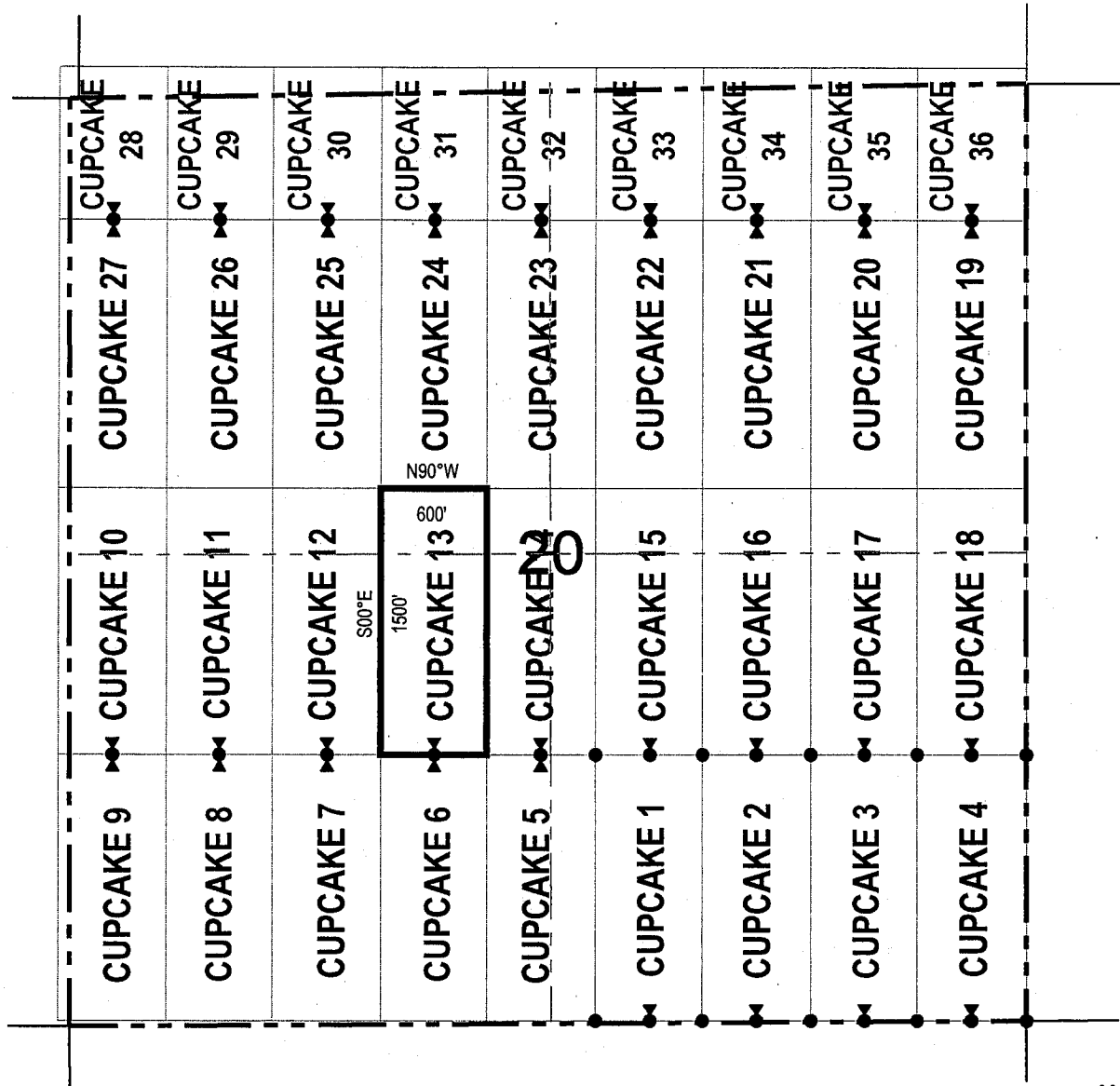
LODE CLAIM LOCATION MAP



● Corner Posts ▲ Location Monuments Scale: 1"=1000'

1. The above map depicts the **CUPCAKE 12** Lode Claim, NE 1/4 and NW 1/4 of the SW 1/4 and SE 1/4 and SW 1/4 of the NW 1/4 of Section 20, Township 2 South, Range 14 East, Gila & Salt River Base and Meridian, Gila County, Arizona, Mineral Creek Mining District.
2. The type of corner and location monuments used are wood 2"x2"x48" posts and metal tags with location information written thereon.
3. The bearings and distances in degrees and feet between claim corners are as depicted on the above map.

LODE CLAIM LOCATION MAP

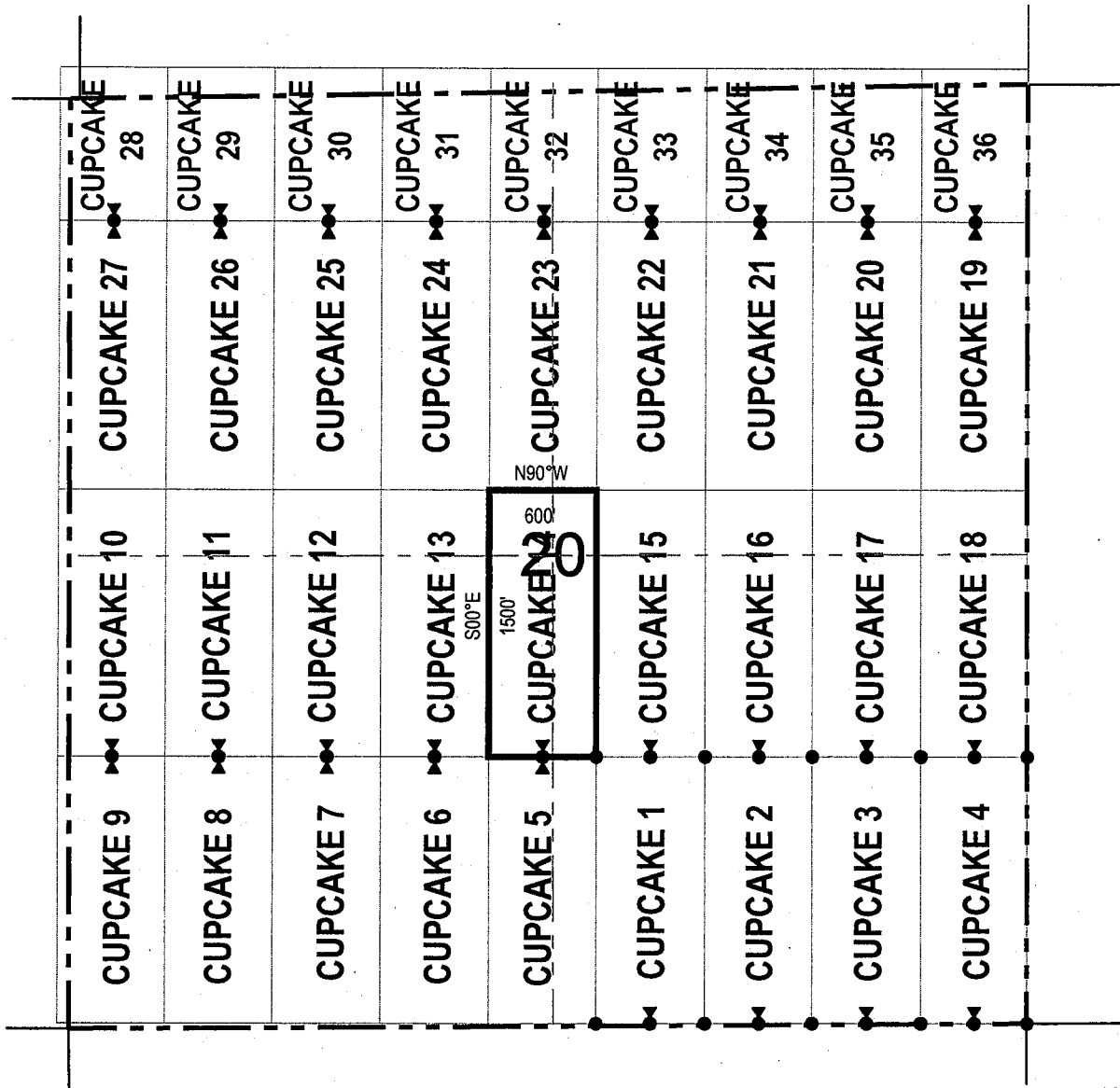


● Corner Posts ▲ Location Monuments Scale: 1"=1000'



1. The above map depicts the **CUPCAKE 13** Lode Claim, NE 1/4 of the SW 1/4 and SE 1/4 of the NW 1/4 of Section 20, Township 2 South, Range 14 East, Gila & Salt River Base and Meridian, Gila County, Arizona, Mineral Creek Mining District.
2. The type of corner and location monuments used are wood 2"x2"x48" posts and metal tags with location information written thereon.
3. The bearings and distances in degrees and feet between claim corners are as depicted on the above map.

LODE CLAIM LOCATION MAP

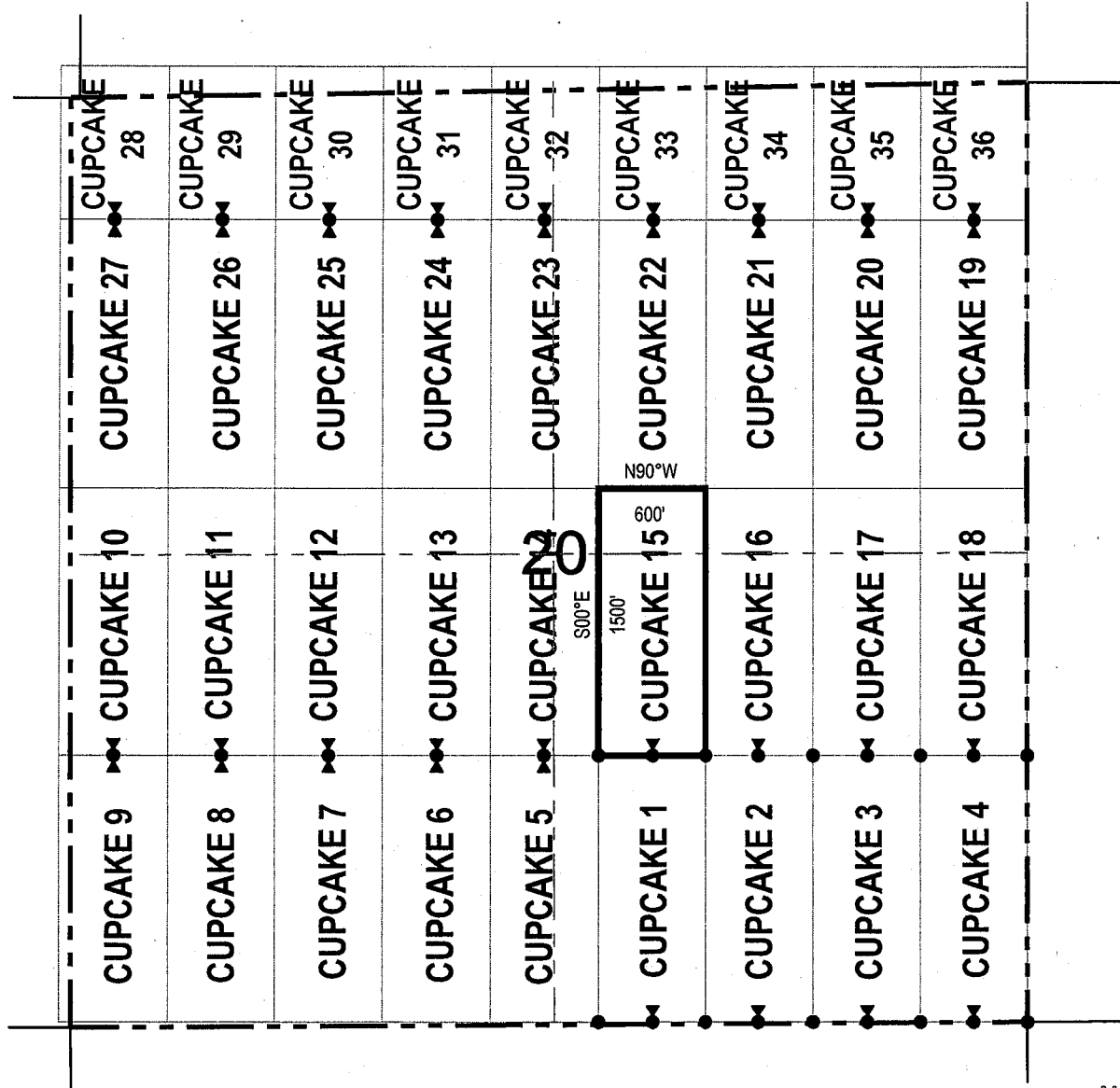


● Corner Posts ▲ Location Monuments Scale: 1"=1000'



1. The above map depicts the **CUPCAKE 14** Lode Claim, NE 1/4 of the SW 1/4, NW 1/4 of the SE 1/4, SW 1/4 of the NE 1/4 and SE 1/4 of the NW 1/4 of Section 20, Township 2 South, Range 14 East, Gila & Salt River Base and Meridian, Gila County, Arizona, Mineral Creek Mining District.
2. The type of corner and location monuments used are wood 2"x2"x48" posts and metal tags with location information written thereon.
3. The bearings and distances in degrees and feet between claim corners are as depicted on the above map.

LODE CLAIM LOCATION MAP



● Corner Posts ▲ Location Monuments Scale: 1"=1000'



1. The above map depicts the **CUPCAKE 15** Lode Claim, NW 1/4 of the SE 1/4 and SW 1/4 of the NE 1/4 of Section 20, Township 2 South, Range 14 East, Gila & Salt River Base and Meridian, Gila County, Arizona, Mineral Creek Mining District.
2. The type of corner and location monuments used are wood 2"x2"x48" posts and metal tags with location information written thereon.
3. The bearings and distances in degrees and feet between claim corners are as depicted on the above map.

When recorded return to:
 Resolution Copper Mining LLC
 P.O. Box 1944
 Superior, AZ 85723

LOCATION NOTICE FOR LODE MINING CLAIM

NOTICE IS HEREBY GIVEN that the CUPCAKE 16
 _____ lode mining claim has been located
 by Resolution Copper Mining LLC whose current mailing
 address is P.O. Box 1944
Superior AZ 85273

RECEIVED
 DIA AZ STATE OFFICE
 2019 OCT 22 A 11:50
 PHOENIX, ARIZONA

The general course of this claim is north / south and it is situated in Gila
 County, Arizona. This claim is 1500 feet in length and 600 feet in width. This claim runs
 from the location monument on which this location notice is posted approximately 1490 feet in a
northerly direction to the north end line and 10 feet in a southerly direction to the
south end line. This claim is marked by six monuments, one at each corner and one at the center of each
 end line of the claim.

The location monument on which this notice is posted is situated within Section 20, Township 2
South, Range 14 East, Gila Salt River Base and Meridian, Arizona and this claim encompasses portions
 of the following quarter section (s), section (s), Township (s) and Range (s) NW 1/4 and NE 1/4 of the SE 1/4 and
SW 1/4 and SE 1/4 of the NE 1/4 of Section 20, Township 2 South, Range 14 East, Gila & Salt River Base and Meridian,
Gila County, Arizona, Mineral Creek Mining District.

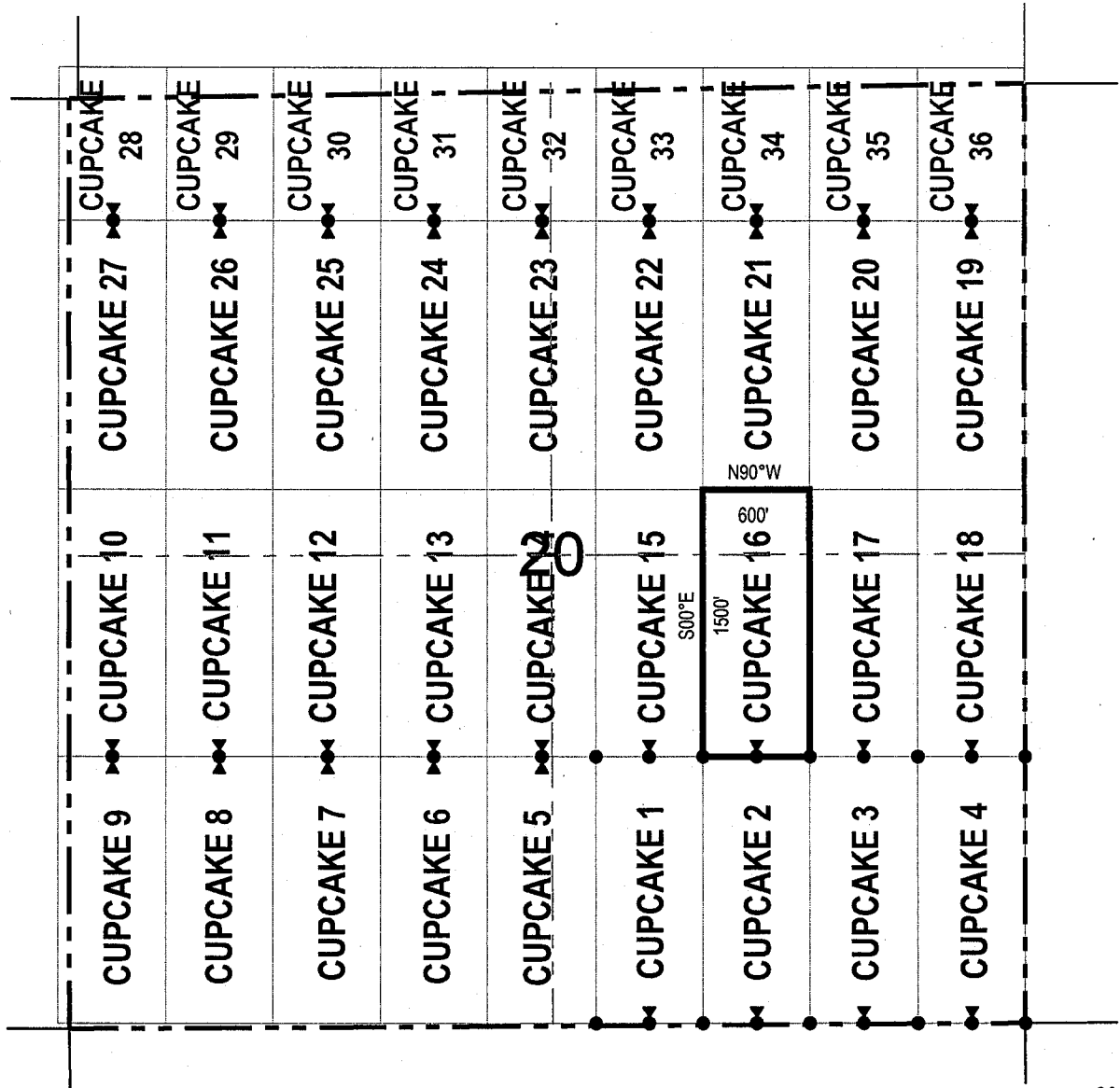
The locality of this claim with reference to some natural object or permanent monument and additional information
 (if any) concerning its locality are as follows: 3000 feet north and 1200 feet west of the southeast corner of
Section 20, Township 2 South, Range 14 East, to the northeast corner of the claim.

DATED AND POSTED on the ground this 17 day of September, 2019.

LOCATOR (s) Resolution Copper Mining LLC AGENT: T. Robert Breen /
P.O. Box 1944
Superior, Arizona 85273

AMC 458009

LODE CLAIM LOCATION MAP

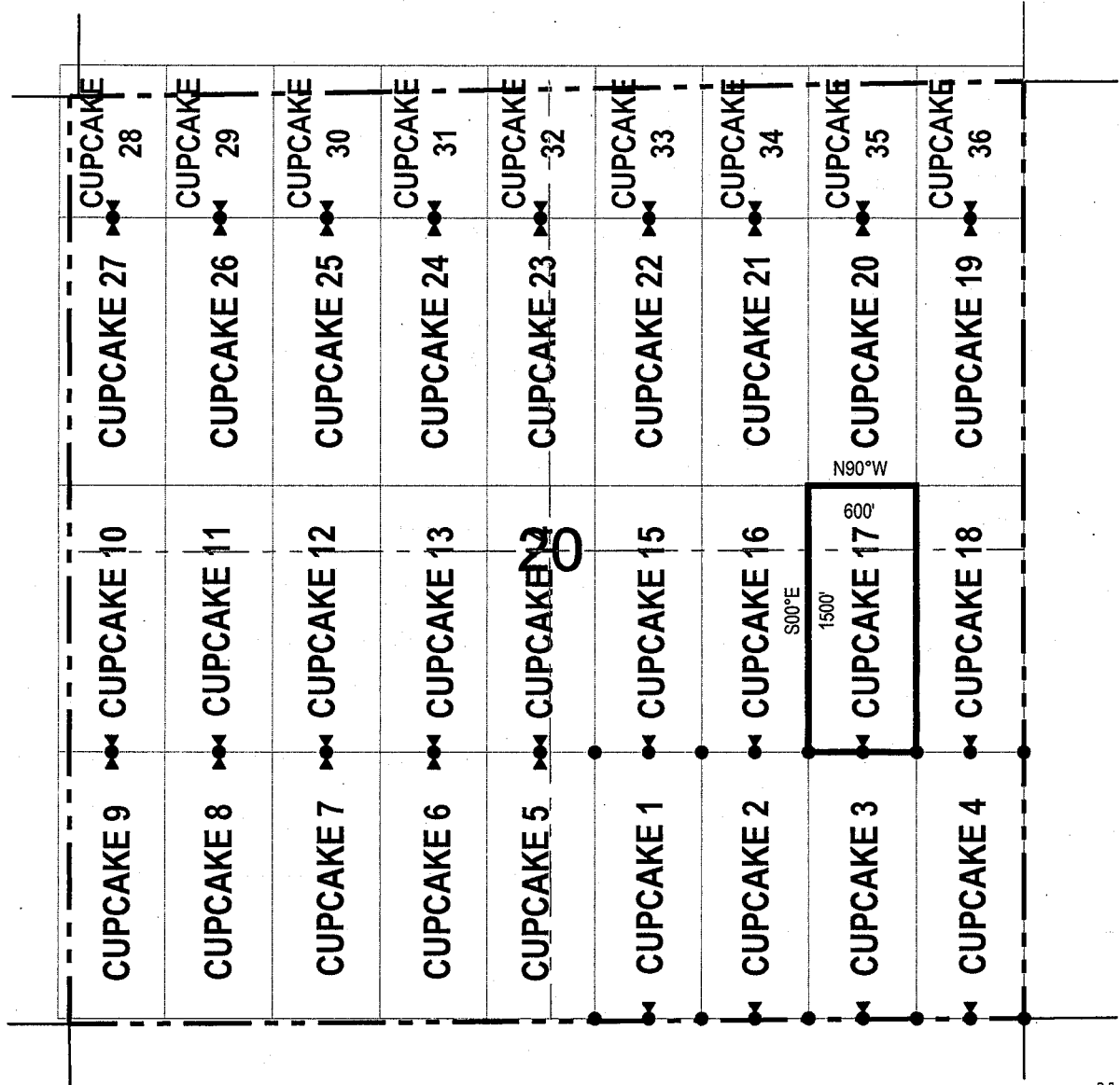


● Corner Posts ▲ Location Monuments Scale: 1"=1000'



1. The above map depicts the **CUPCAKE 16** Lode Claim, NW 1/4 and NE 1/4 of the SE 1/4 and SW 1/4 and SE 1/4 of the NE 1/4 of Section 20, Township 2 South, Range 14 East, Gila & Salt River Base and Meridian, Gila County, Arizona, Mineral Creek Mining District.
2. The type of corner and location monuments used are wood 2"x2"x48" posts and metal tags with location information written thereon.
3. The bearings and distances in degrees and feet between claim corners are as depicted on the above map.

LODE CLAIM LOCATION MAP

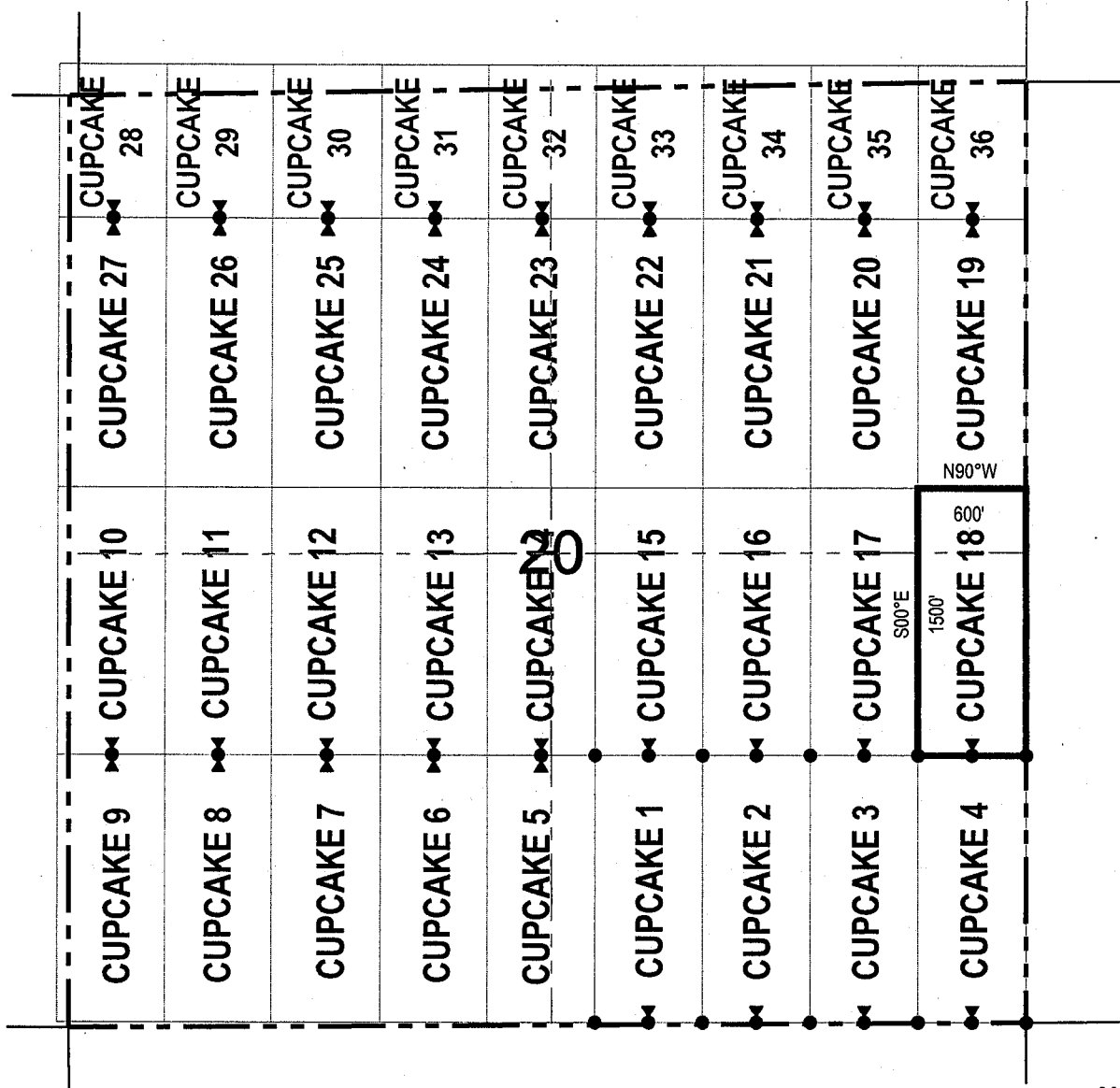


● Corner Posts ▲ Location Monuments Scale: 1"=1000'



1. The above map depicts the **CUPCAKE 17** Lode Claim, NE 1/4 of the SE 1/4 and SE 1/4 of the NE 1/4 of Section 20, Township 2 South, Range 14 East, Gila & Salt River Base and Meridian, Gila County, Arizona, Mineral Creek Mining District.
2. The type of corner and location monuments used are wood 2"x2"x48" posts and metal tags with location information written thereon.
3. The bearings and distances in degrees and feet between claim corners are as depicted on the above map.

LODE CLAIM LOCATION MAP

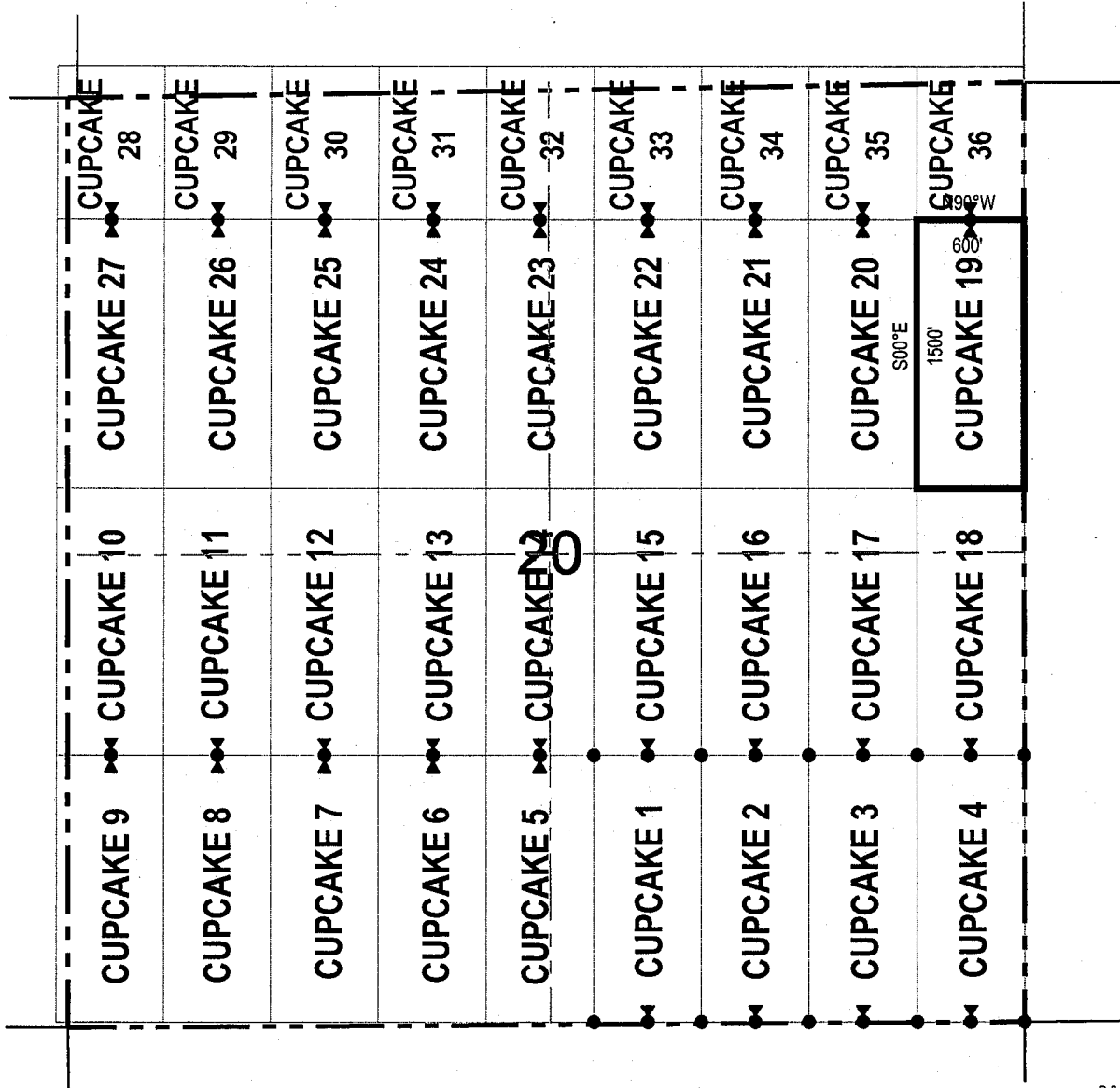


● Corner Posts ▲ Location Monuments Scale: 1"=1000'



1. The above map depicts the **CUPCAKE 18** Lode Claim, NE 1/4 of the SE 1/4 and SE 1/4 of the NE 1/4 of Section 20, Township 2 South, Range 14 East, Gila & Salt River Base and Meridian, Gila County, Arizona, Mineral Creek Mining District.
2. The type of corner and location monuments used are wood 2"x2"x48" posts and metal tags with location information written thereon.
3. The bearings and distances in degrees and feet between claim corners are as depicted on the above map.

LODE CLAIM LOCATION MAP



● Corner Posts ▲ Location Monuments Scale: 1"=1000'



1. The above map depicts the **CUPCAKE 19** Lode Claim, NE 1/4 and SE 1/4 of the NE 1/4 of Section 20, Township 2 South, Range 14 East, Gila & Salt River Base and Meridian, Gila County, Arizona, Mineral Creek Mining District.
2. The type of corner and location monuments used are wood 2"x2"x48" posts and metal tags with location information written thereon.
3. The bearings and distances in degrees and feet between claim corners are as depicted on the above map.

When recorded return to:

Resolution Copper Mining LLC
P.O. Box 1944
Superior, AZ 85723

LOCATION NOTICE FOR LODE MINING CLAIM

NOTICE IS HEREBY GIVEN that the CUPCAKE 20
_____ lode mining claim has been located
by Resolution Copper Mining LLC whose current mailing
address is P.O. Box 1944
Superior AZ 85273

RECEIVED
MIN / AZ STATE OFFICE
2019 OCT 22 A 11: 51
PHOENIX, ARIZONA

The general course of this claim is north / south and it is situated in Gila
County, Arizona. This claim is 1500 feet in length and 600 feet in width. This claim runs
from the location monument on which this location notice is posted approximately 10 feet in a
northerly direction to the north end line and 1490 feet in a southerly direction to the
south end line. This claim is marked by six monuments, one at each corner and one at the center of each
end line of the claim.

The location monument on which this notice is posted is situated within Section 20, Township 2
South, Range 14 East, Gila Salt River Base and Meridian, Arizona and this claim encompasses portions
of the following quarter section (s), section (s), Township (s) and Range (s) NE 1/4 and SE 1/4 of the NE 1/4 of
Section 20, Township 2 South, Range 14 East, Gila & Salt River Base and Meridian, Gila County, Arizona, Mineral Creek
Mining District.

The locality of this claim with reference to some natural object or permanent monument and additional information
(if any) concerning its locality are as follows: 4500 feet north and 600 feet west of the southeast corner of Section
20, Township 2 South, Range 14 East, to the northeast corner of the claim.

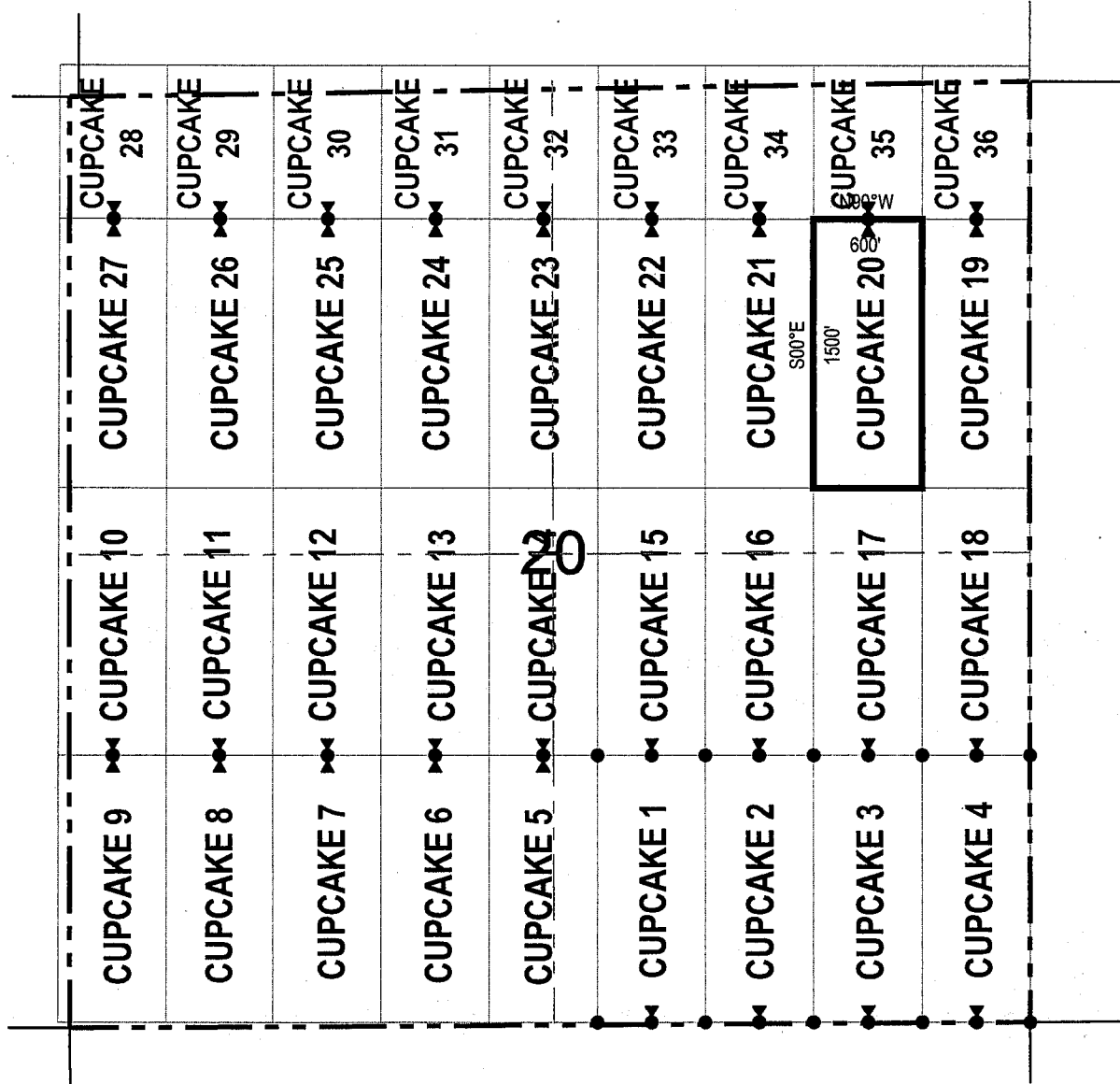
DATED AND POSTED on the ground this 16 day of September, 2019

LOCATOR (s) Resolution Copper Mining LLC AGENT: T. Robert Breen /
P.O. Box 1944
Superior, Arizona 85273



AMC 458013

LODE CLAIM LOCATION MAP

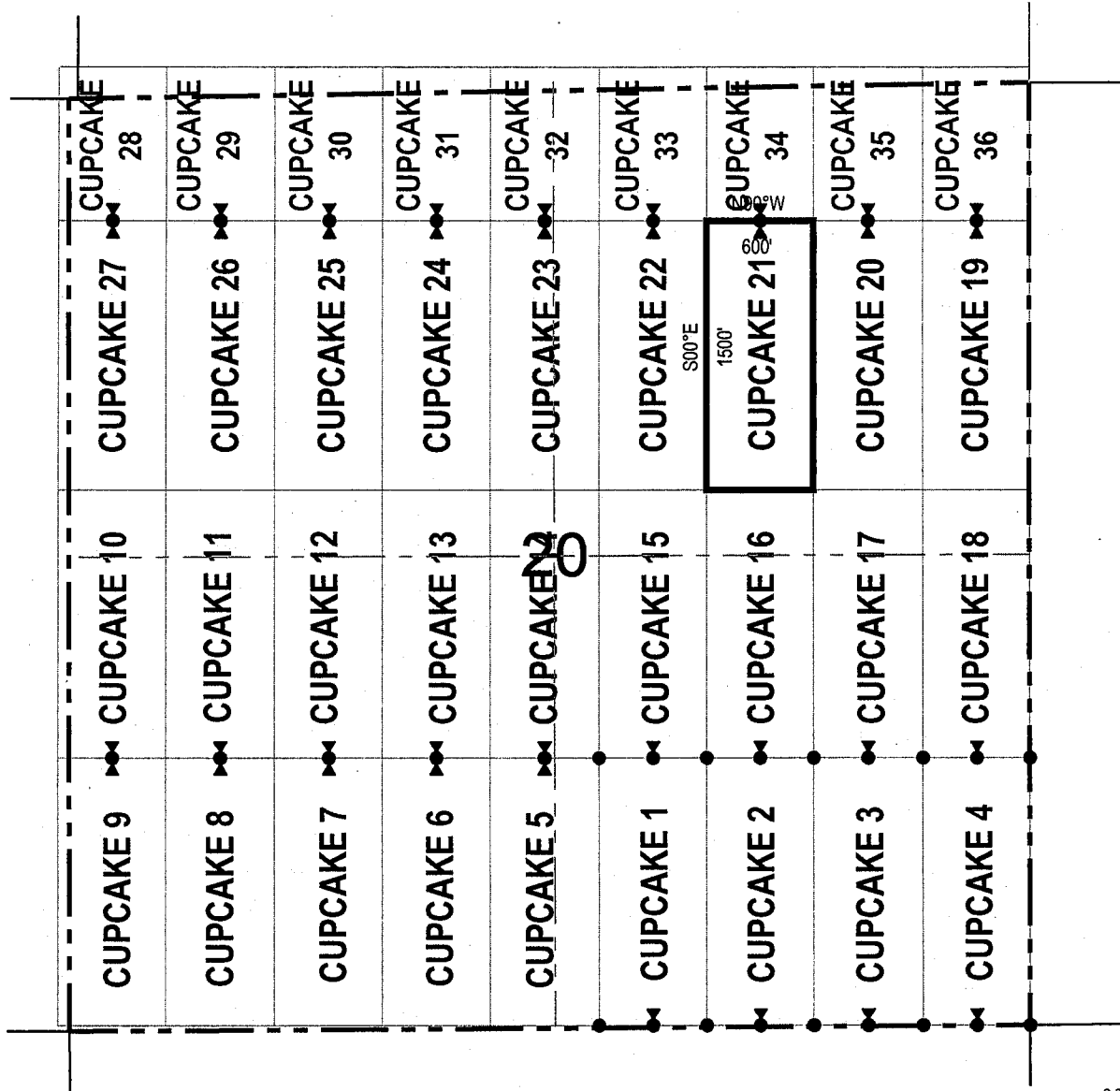


● Corner Posts ▲ Location Monuments Scale: 1"=1000'



1. The above map depicts the **CUPCAKE 20** Lode Claim, NE 1/4 and SE 1/4 of the NE 1/4 of Section 20, Township 2 South, Range 14 East, Gila & Salt River Base and Meridian, Gila County, Arizona, Mineral Creek Mining District.
2. The type of corner and location monuments used are wood 2"x2"x48" posts and metal tags with location information written thereon.
3. The bearings and distances in degrees and feet between claim corners are as depicted on the above map.

LODE CLAIM LOCATION MAP



● Corner Posts ▲ Location Monuments Scale: 1"=1000'

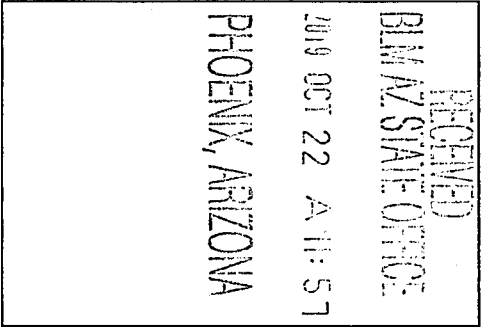


1. The above map depicts the **CUPCAKE 21** Lode Claim, NW 1/4, SW 1/4, SE 1/4 and NE 1/4 of the NE 1/4 of Section 20, Township 2 South, Range 14 East, Gila & Salt River Base and Meridian, Gila County, Arizona, Mineral Creek Mining District.
2. The type of corner and location monuments used are wood 2"x2"x48" posts and metal tags with location information written thereon.
3. The bearings and distances in degrees and feet between claim corners are as depicted on the above map.

When recorded return to:
 Resolution Copper Mining LLC
 P.O. Box 1944
 Superior, AZ 85723

LOCATION NOTICE FOR LODE MINING CLAIM


NOTICE IS HEREBY GIVEN that the CUPCAKE 22
 _____ lode mining claim has been located
 by Resolution Copper Mining LLC whose current mailing
 address is P.O. Box 1944
Superior AZ 85273



The general course of this claim is north / south and it is situated in Gila
 County, Arizona. This claim is 1500 feet in length and 600 feet in width. This claim runs
 from the location monument on which this location notice is posted approximately 10 feet in a
northerly direction to the north end line and 1490 feet in a southerly direction to the
south end line. This claim is marked by six monuments, one at each corner and one at the center of each
 end line of the claim.

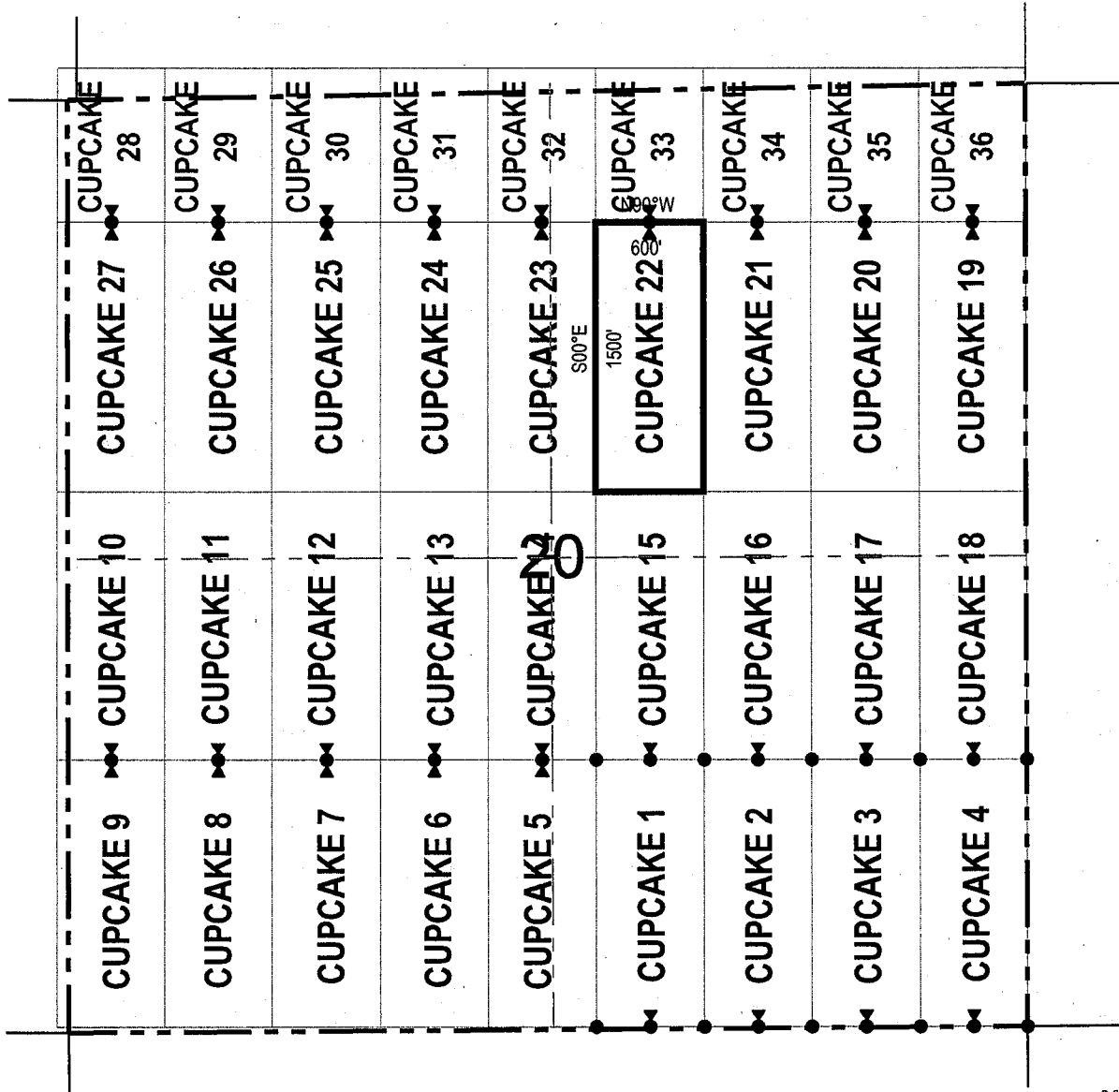
The location monument on which this notice is posted is situated within Section 20, Township 2
South, Range 14 East, Gila Salt River Base and Meridian, Arizona and this claim encompasses portions
 of the following quarter section (s), section (s), Township (s) and Range (s) NW 1/4 and SW 1/4 of the NE 1/4 of
Section 20, Township 2 South, Range 14 East, Gila & Salt River Base and Meridian, Gila County, Arizona, Mineral Creek
Mining District.

The locality of this claim with reference to some natural object or permanent monument and additional information
 (if any) concerning its locality are as follows: 4500 feet north and 1800 feet west of the southeast corner of
Section 20, Township 2 South, Range 14 East, to the northeast corner of the claim.

DATED AND POSTED on the ground this 16 day of September, 2019
 LOCATOR (s) Resolution Copper Mining LLC AGENT: T. Robert Breen / 
P.O. Box 1944
Superior, Arizona 85273

AN 458015

LODE CLAIM LOCATION MAP



● Corner Posts ▲ Location Monuments Scale: 1"=1000'



1. The above map depicts the **CUPCAKE 22** Lode Claim, NW 1/4 and SW 1/4 of the NE 1/4 of Section 20, Township 2 South, Range 14 East, Gila & Salt River Base and Meridian, Gila County, Arizona, Mineral Creek Mining District.
2. The type of corner and location monuments used are wood 2"x2"x48" posts and metal tags with location information written thereon.
3. The bearings and distances in degrees and feet between claim corners are as depicted on the above map.

When recorded return to:
 Resolution Copper Mining LLC
 P.O. Box 1944
 Superior, AZ 85723

LOCATION NOTICE FOR LODE MINING CLAIM


NOTICE IS HEREBY GIVEN that the CUPCAKE 23
 lode mining claim has been located
 by Resolution Copper Mining LLC whose current mailing
 address is P.O. Box 1944
Superior AZ 85273

RECEIVED
 BLM AZ STATE OFFICE
 2019 OCT 22 A 11:57
 PHOENIX, ARIZONA

The general course of this claim is north / south and it is situated in Gila
 County, Arizona. This claim is 1500 feet in length and 600 feet in width. This claim runs
 from the location monument on which this location notice is posted approximately 10 feet in a
northerly direction to the north end line and 1490 feet in a southerly direction to the
south end line. This claim is marked by six monuments, one at each corner and one at the center of each
 end line of the claim.

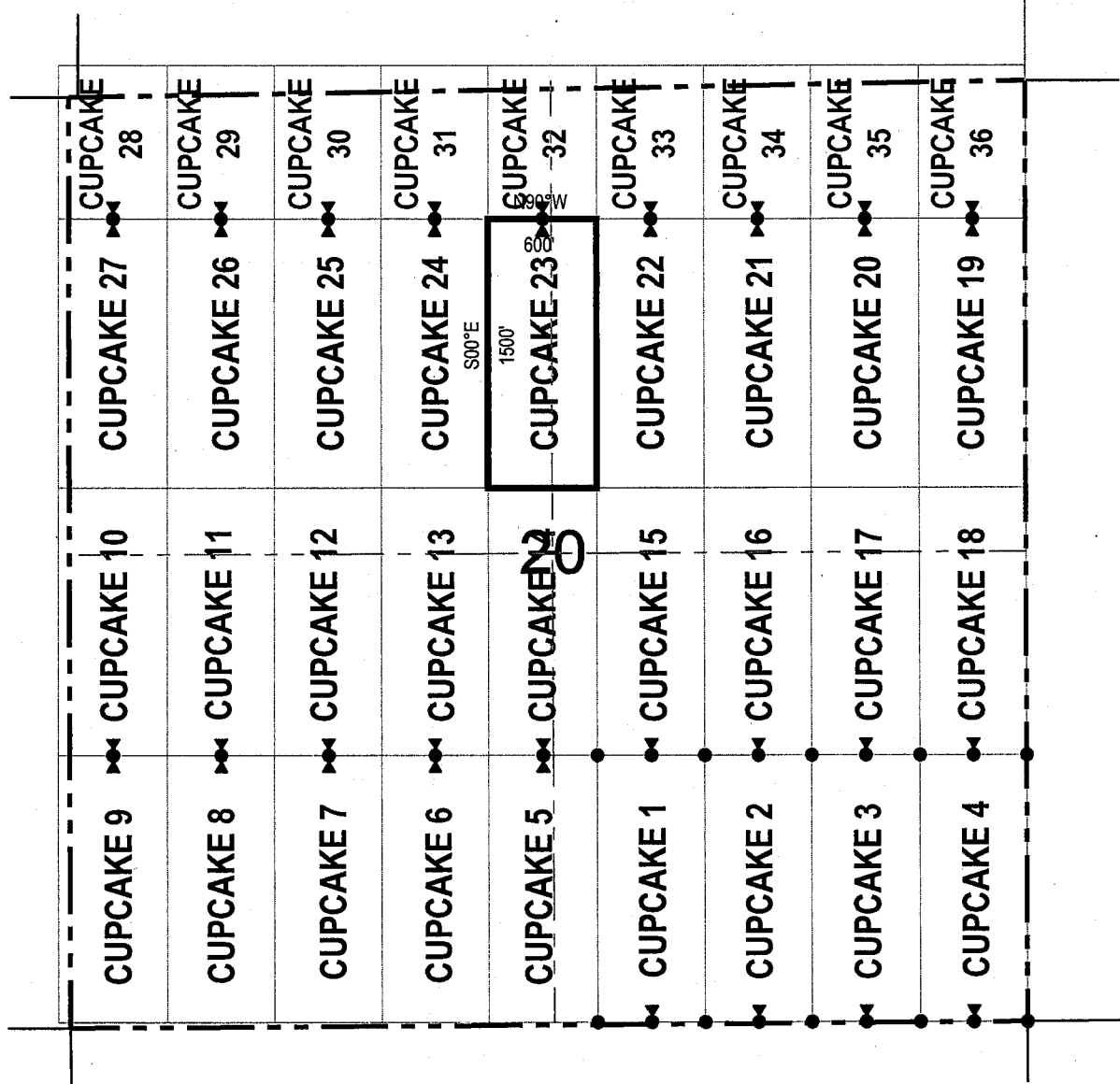
The location monument on which this notice is posted is situated within Section 20, Township 2
South, Range 14 East, Gila Salt River Base and Meridian, Arizona and this claim encompasses portions
 of the following quarter section (s), section (s), Township (s) and Range (s) NE 1/4 and SE 1/4 of the NW 1/4, and
SW 1/4 and NW 1/4 of the NE 1/4 of Section 20, Township 2 South, Range 14 East, Gila & Salt River Base and Meridian,
Gila County, Arizona, Mineral Creek Mining District.

The locality of this claim with reference to some natural object or permanent monument and additional information
 (if any) concerning its locality are as follows: 4500 feet north and 2400 feet west of the southeast corner of
Section 20, Township 2 South, Range 14 East, to the northeast corner of the claim.

DATED AND POSTED on the ground this 16 day of September, 2019
 LOCATOR (s) Resolution Copper Mining LLC AGENT: T. Robert Breen / 
P.O. Box 1944
Superior, Arizona 85273

AMC 458016

LODE CLAIM LOCATION MAP



● Corner Posts ▲ Location Monuments Scale: 1"=1000'

1. The above map depicts the **CUPCAKE 23** Lode Claim, NE 1/4 and SE 1/4 of the NW 1/4, and SW 1/4 and NW 1/4 of the NE 1/4 of Section 20, Township 2 South, Range 14 East, Gila & Salt River Base and Meridian, Gila County, Arizona, Mineral Creek Mining District.
2. The type of corner and location monuments used are wood 2"x2"x48" posts and metal tags with location information written thereon.
3. The bearings and distances in degrees and feet between claim corners are as depicted on the above map.

When recorded return to:
 Resolution Copper Mining LLC
 P.O. Box 1944
 Superior, AZ 85723

LOCATION NOTICE FOR LODE MINING CLAIM

NOTICE IS HEREBY GIVEN that the CUPCAKE 24
 _____ lode mining claim has been located
 by Resolution Copper Mining LLC whose current mailing
 address is P.O. Box 1944
Superior AZ 85273

RECEIVED
 BLM AZ STATE OFFICE
 2019 OCT 22 A 11:57
 PHOENIX, ARIZONA

The general course of this claim is north / south and it is situated in Gila
 County, Arizona. This claim is 1500 feet in length and 600 feet in width. This claim runs
 from the location monument on which this location notice is posted approximately 10 feet in a
northerly direction to the north end line and 1490 feet in a southerly direction to the
south end line. This claim is marked by six monuments, one at each corner and one at the center of each
 end line of the claim.

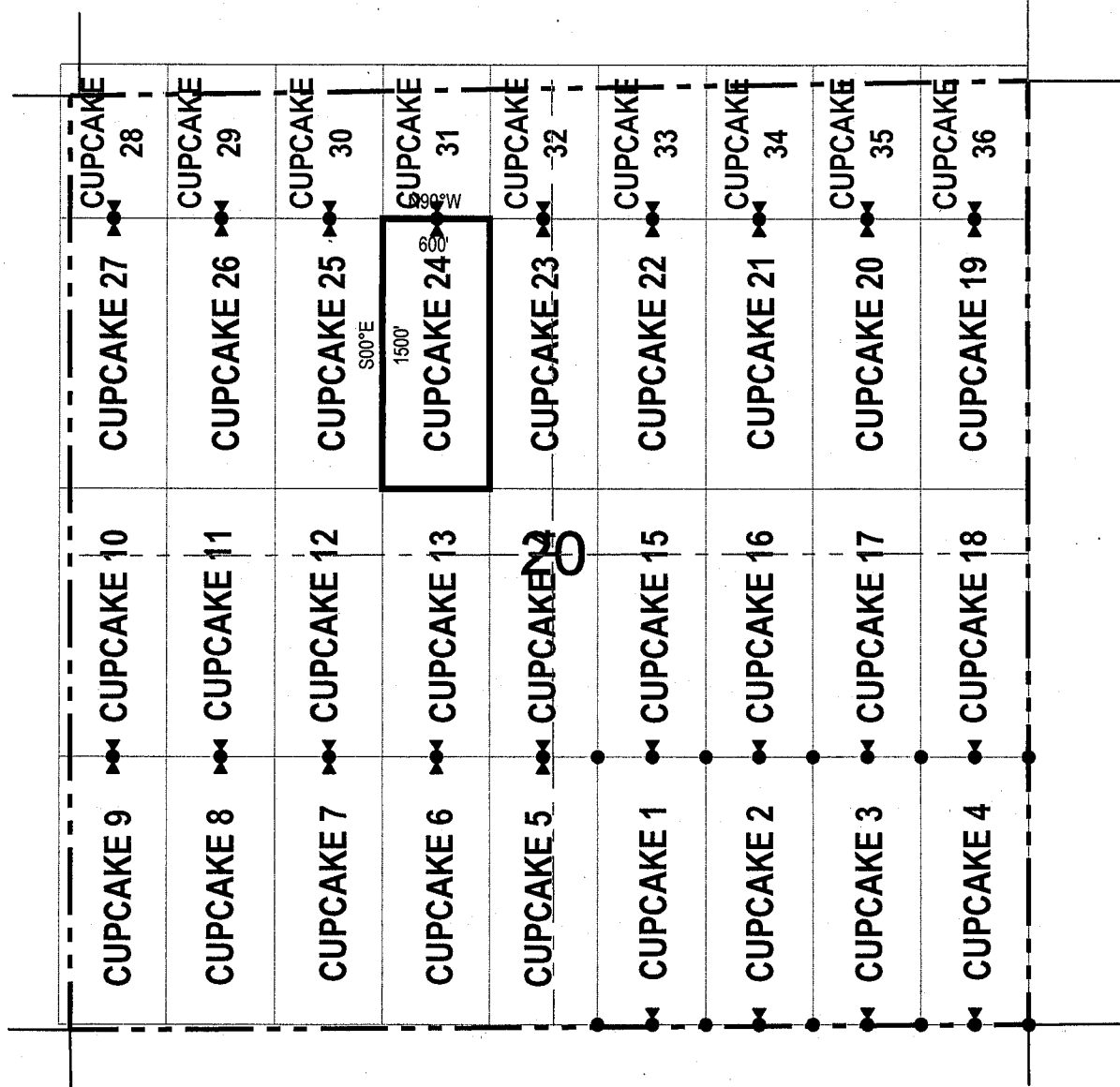
The location monument on which this notice is posted is situated within Section 20, Township 2
South, Range 14 East, Gila Salt River Base and Meridian, Arizona and this claim encompasses portions
 of the following quarter section (s), section (s), Township (s) and Range (s) NE 1/4 and SE 1/4 of the NW 1/4 of
Section 20, Township 2 South, Range 14 East, Gila & Salt River Base and Meridian, Gila County, Arizona, Mineral Creek
Mining District.

The locality of this claim with reference to some natural object or permanent monument and additional information
 (if any) concerning its locality are as follows: 4500 feet north and 3000 feet west of the southeast corner of
Section 20, Township 2 South, Range 14 East, to the northeast corner of the claim.

DATED AND POSTED on the ground this 16 day of September, 2019
 LOCATOR (s) Resolution Copper Mining LLC AGENT: T. Robert Breen /
P.O. Box 1944
Superior, Arizona 85273

AMC458017

LODE CLAIM LOCATION MAP



● Corner Posts ▲ Location Monuments Scale: 1"=1000'

1. The above map depicts the **CUPCAKE 24** Lode Claim, NE 1/4 and SE 1/4 of the NW 1/4 of Section 20, Township 2 South, Range 14 East, Gila & Salt River Base and Meridian, Gila County, Arizona, Mineral Creek Mining District.
2. The type of corner and location monuments used are wood 2"x2"x48" posts and metal tags with location information written thereon.
3. The bearings and distances in degrees and feet between claim corners are as depicted on the above map.

When recorded return to:
Resolution Copper Mining LLC
P.O. Box 1944
Superior, AZ 85723

LOCATION NOTICE FOR LODE MINING CLAIM

NOTICE IS HEREBY GIVEN that the CUPCAKE 25
_____ lode mining claim has been located
by Resolution Copper Mining LLC whose current mailing
address is P.O. Box 1944
Superior AZ 85273

RECEIVED
BLM AZ STATE OFFICE
2019 OCT 22 A 11:57
PHOENIX, ARIZONA

The general course of this claim is north / south and it is situated in Gila
County, Arizona. This claim is 1500 feet in length and 600 feet in width. This claim runs
from the location monument on which this location notice is posted approximately 10 feet in a
northerly direction to the north end line and 1490 feet in a southerly direction to the
south end line. This claim is marked by six monuments, one at each corner and one at the center of each
end line of the claim.

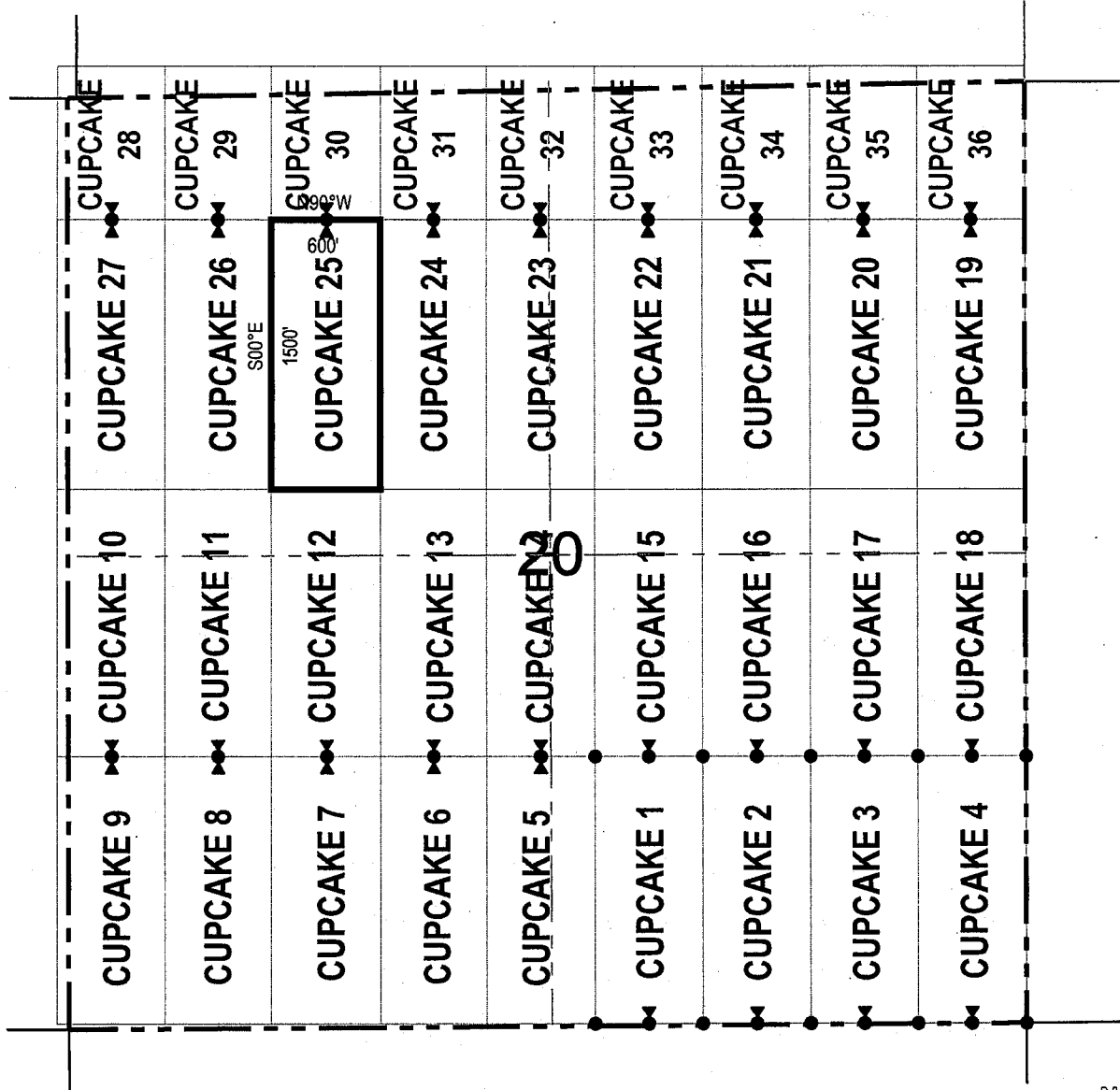
The location monument on which this notice is posted is situated within Section 20, Township 2
South, Range 14 East, Gila Salt River Base and Meridian, Arizona and this claim encompasses portions
of the following quarter section (s), section (s), Township (s) and Range (s) NE 1/4, NW 1/4, SW 1/4 and SE 1/4 of
the NW 1/4 of Section 20, Township 2 South, Range 14 East, Gila & Salt River Base and Meridian, Gila County, Arizona,
Mineral Creek Mining District.

The locality of this claim with reference to some natural object or permanent monument and additional information
(if any) concerning its locality are as follows: 4500 feet north and 3600 feet west of the southeast corner of
Section 20, Township 2 South, Range 14 East, to the northeast corner of the claim.

DATED AND POSTED on the ground this 16 day of September, 2019
LOCATOR (s) Resolution Copper Mining LLC AGENT: T. Robert Breen /
P.O. Box 1944
Superior, Arizona 85273

AMC458018

LODE CLAIM LOCATION MAP



● Corner Posts ▲ Location Monuments Scale: 1"=1000'



1. The above map depicts the **CUPCAKE 25** Lode Claim, NE 1/4, NW 1/4, SW 1/4 and SE 1/4 of the NW 1/4 of Section 20, Township 2 South, Range 14 East, Gila & Salt River Base and Meridian, Gila County, Arizona, Mineral Creek Mining District.
2. The type of corner and location monuments used are wood 2"x2"x48" posts and metal tags with location information written thereon.
3. The bearings and distances in degrees and feet between claim corners are as depicted on the above map.

When recorded return to:
Resolution Copper Mining LLC
P.O. Box 1944
Superior, AZ 85723

LOCATION NOTICE FOR LODE MINING CLAIM


NOTICE IS HEREBY GIVEN that the CUPCAKE 26
lode mining claim has been located
by Resolution Copper Mining LLC whose current mailing
address is P.O. Box 1944
Superior AZ 85273

RECEIVED
GILIA AZ STATE OFFICE
2019 OCT 22 A 11:57
PHOENIX, ARIZONA

The general course of this claim is north / south and it is situated in Gila
County, Arizona. This claim is 1500 feet in length and 600 feet in width. This claim runs
from the location monument on which this location notice is posted approximately 10 feet in a
northerly direction to the north end line and 1490 feet in a southerly direction to the
south end line. This claim is marked by six monuments, one at each corner and one at the center of each
end line of the claim.

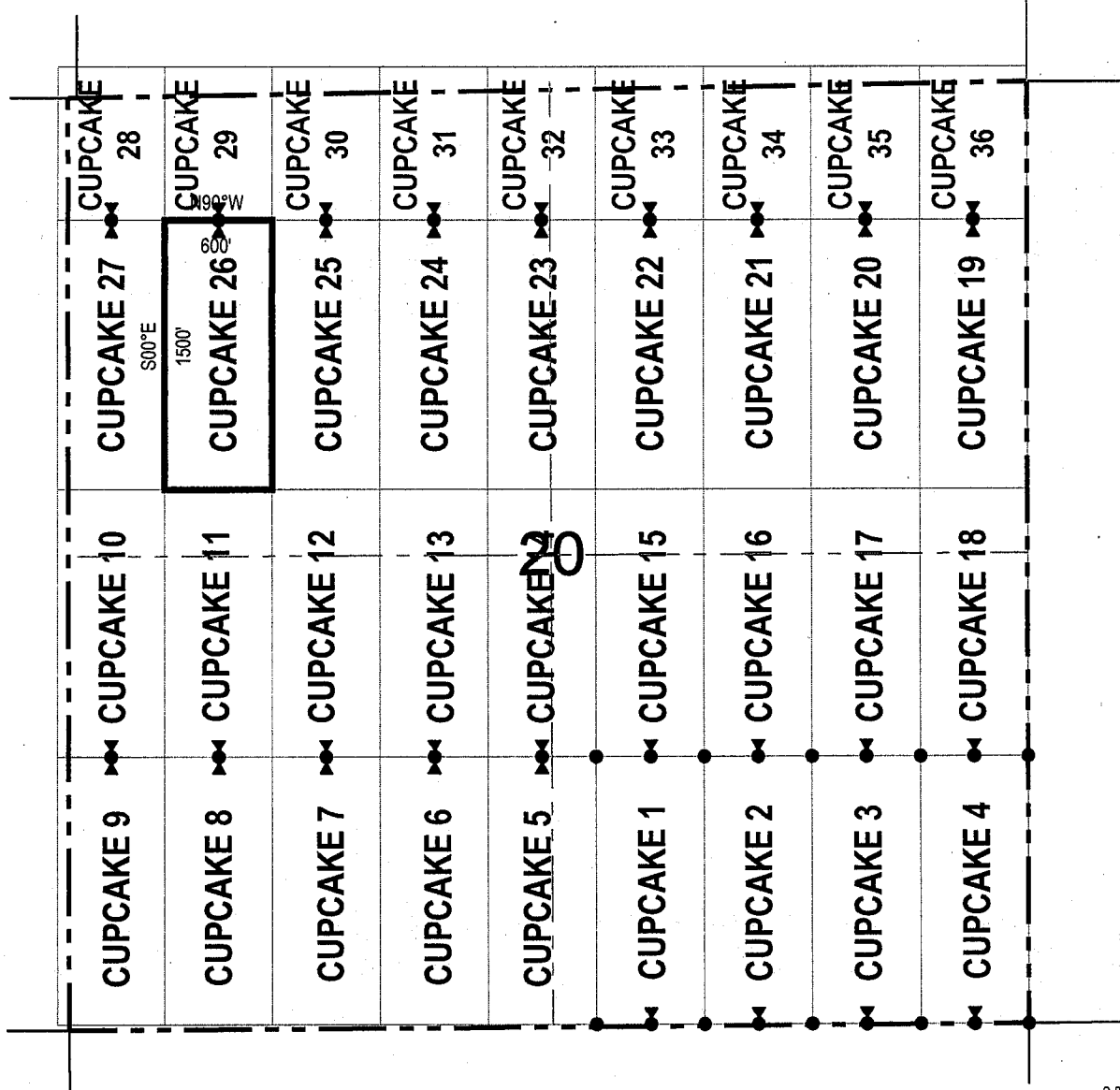
The location monument on which this notice is posted is situated within Section 20, Township 2
South, Range 14 East, Gila Salt River Base and Meridian, Arizona and this claim encompasses portions
of the following quarter section (s), section (s), Township (s) and Range (s) NW 1/4 and SW 1/4 of the NW 1/4 of
Section 20, Township 2 South, Range 14 East, Gila & Salt River Base and Meridian, Gila County, Arizona, Mineral Creek
Mining District.

The locality of this claim with reference to some natural object or permanent monument and additional information
(if any) concerning its locality are as follows: 4500 feet north and 4200 feet west of the southeast corner of
Section 20, Township 2 South, Range 14 East, to the northeast corner of the claim.

DATED AND POSTED on the ground this 16 day of September, 2019
LOCATOR (s) Resolution Copper Mining LLC AGENT: T. Robert Breen / 
P.O. Box 1944
Superior, Arizona 85273

AMC458019

LODE CLAIM LOCATION MAP



1. The above map depicts the **CUPCAKE 26** Lode Claim, NW 1/4 and SW 1/4 of the NW 1/4 of Section 20, Township 2 South, Range 14 East, Gila & Salt River Base and Meridian, Gila County, Arizona, Mineral Creek Mining District.
2. The type of corner and location monuments used are wood 2"x2"x48" posts and metal tags with location information written thereon.
3. The bearings and distances in degrees and feet between claim corners are as depicted on the above map.

When recorded return to:
 Resolution Copper Mining LLC
 P.O. Box 1944
 Superior, AZ 85723

LOCATION NOTICE FOR LODE MINING CLAIM

NOTICE IS HEREBY GIVEN that the CUPCAKE 27
 _____ lode mining claim has been located
 by Resolution Copper Mining LLC whose current mailing
 address is P.O. Box 1944
Superior AZ 85273

RECEIVED
 BLM AZ STATE OFFICE
 PHOENIX, ARIZONA
 10 OCT 22 A 11:57

The general course of this claim is north / south and it is situated in Gila
 County, Arizona. This claim is 1500 feet in length and 600 feet in width. This claim runs
 from the location monument on which this location notice is posted approximately 10 feet in a
northerly direction to the north end line and 1490 feet in a southerly direction to the
south end line. This claim is marked by six monuments, one at each corner and one at the center of each
 end line of the claim.

The location monument on which this notice is posted is situated within Section 20, Township 2
South, Range 14 East, Gila Salt River Base and Meridian, Arizona and this claim encompasses portions
 of the following quarter section (s), section (s), Township (s) and Range (s) NW 1/4 and SW 1/4 of the NW 1/4 of
Section 20, Township 2 South, Range 14 East, Gila & Salt River Base and Meridian, Gila County, Arizona, Mineral Creek
Mining District.

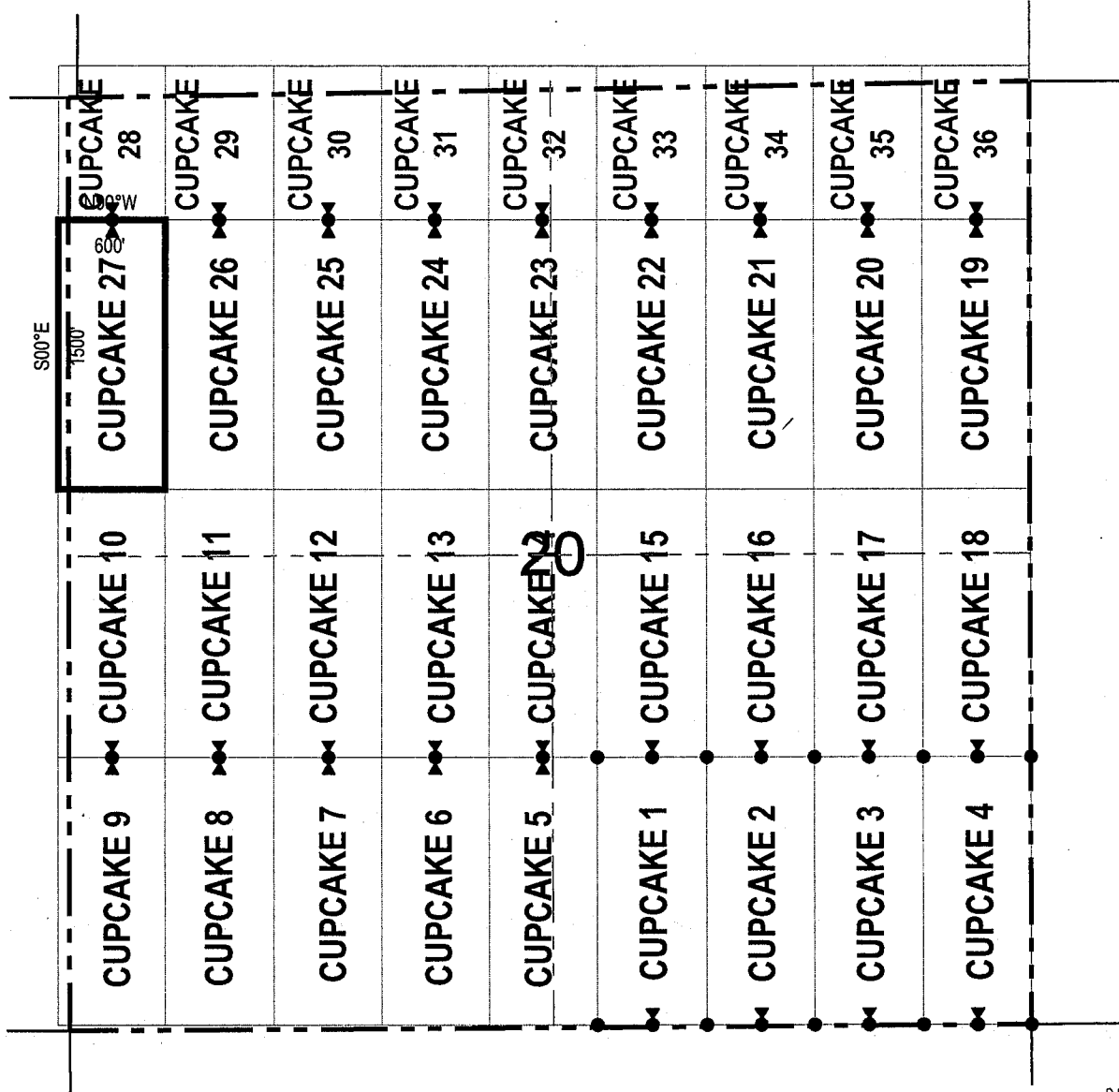
The locality of this claim with reference to some natural object or permanent monument and additional information
 (if any) concerning its locality are as follows: 4500 feet north and 4800 feet west of the southeast corner of
Section 20, Township 2 South, Range 14 East, to the northeast corner of the claim.

DATED AND POSTED on the ground this 16 day of September, 2019

LOCATOR (s) Resolution Copper Mining LLC AGENT: T. Robert Breen / 
P.O. Box 1944
Superior, Arizona 85273

AMC 458020

LODE CLAIM LOCATION MAP



● Corner Posts ▲ Location Monuments Scale: 1"=1000'



1. The above map depicts the **CUPCAKE 27** Lode Claim, NW 1/4 and SW 1/4 of the NW 1/4 of Section 20, Township 2 South, Range 14 East, Gila & Salt River Base and Meridian, Gila County, Arizona, Mineral Creek Mining District.
2. The type of corner and location monuments used are wood 2"x2"x48" posts and metal tags with location information written thereon.
3. The bearings and distances in degrees and feet between claim corners are as depicted on the above map.

When recorded return to:
Resolution Copper Mining LLC
P.O. Box 1944
Superior, AZ 85723

LOCATION NOTICE FOR LODE MINING CLAIM

NOTICE IS HEREBY GIVEN that the CUPCAKE 28

_____ lode mining claim has been located
by Resolution Copper Mining LLC whose current mailing
address is P.O. Box 1944
Superior AZ 85273

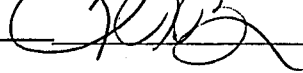
RECEIVED
BLM AZ STATE OFFICE
PHOENIX, ARIZONA
OCT 22 A 11:57

The general course of this claim is north / south and it is situated in Gila
County, Arizona. This claim is 855 feet in length and 600 feet in width. This claim runs
from the location monument on which this location notice is posted approximately 845 feet in a
northerly direction to the north end line and 10 feet in a southerly direction to the
south end line. This claim is marked by six monuments, one at each corner and one at the center of each
end line of the claim.

The location monument on which this notice is posted is situated within Section 20, Township 2
South, Range 14 East, Gila Salt River Base and Meridian, Arizona and this claim encompasses portions
of the following quarter section (s), section (s), Township (s) and Range (s) NW 1/4 of the NW 1/4 of Section 20,
Township 2 South, Range 14 East, Gila & Salt River Base and Meridian, Gila County, Arizona, Mineral Creek Mining
District.

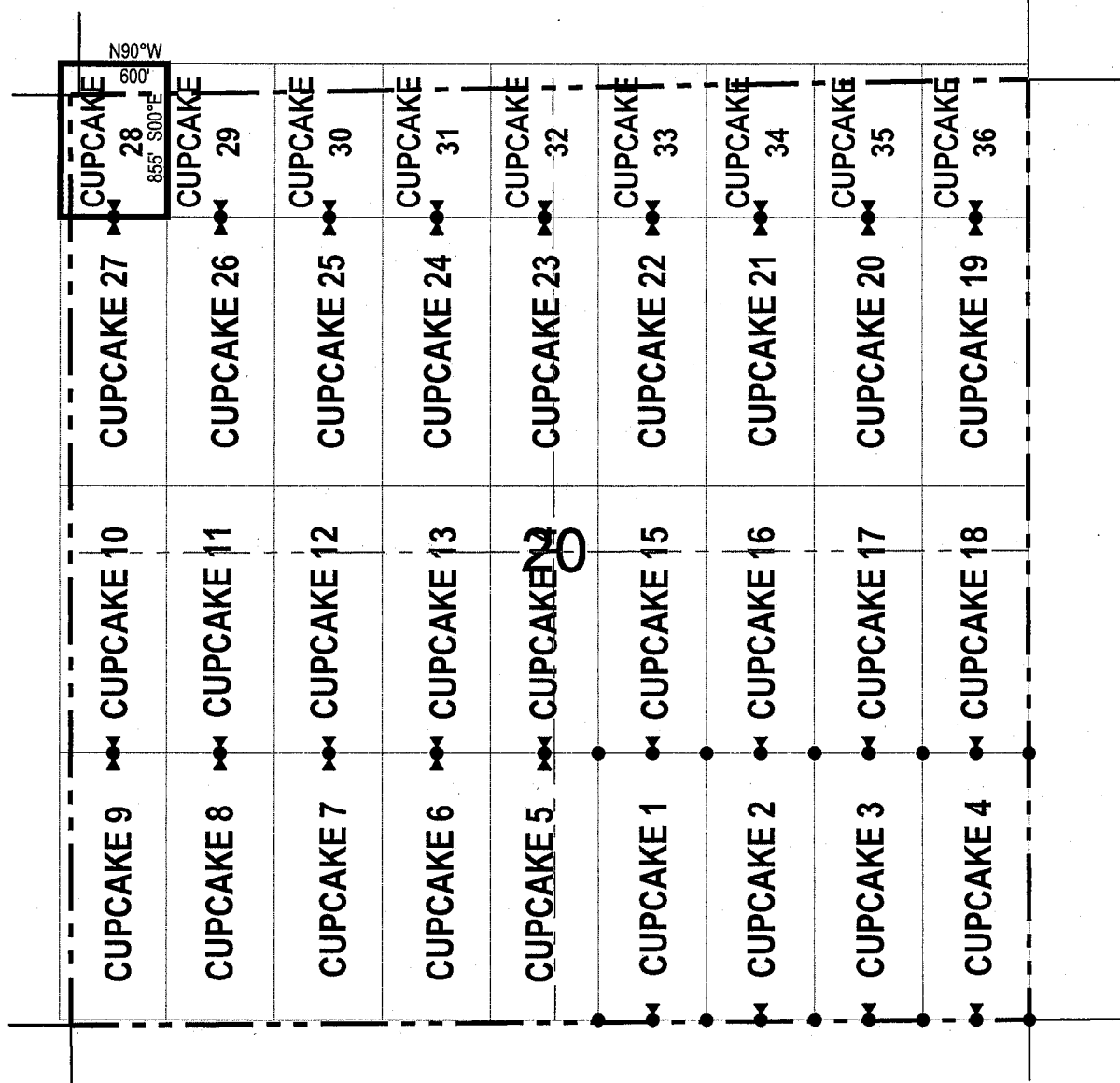
The locality of this claim with reference to some natural object or permanent monument and additional information
(if any) concerning its locality are as follows: 5355 feet north and 4800 feet west of the southeast corner of
Section 20, Township 2 South, Range 14 East, to the northeast corner of the claim.

DATED AND POSTED on the ground this 16 day of September, 2019.

LOCATOR (s) Resolution Copper Mining LLC AGENT: T. Robert Breen / 
P.O. Box 1944
Superior, Arizona 85273

AMC 458021

LODE CLAIM LOCATION MAP

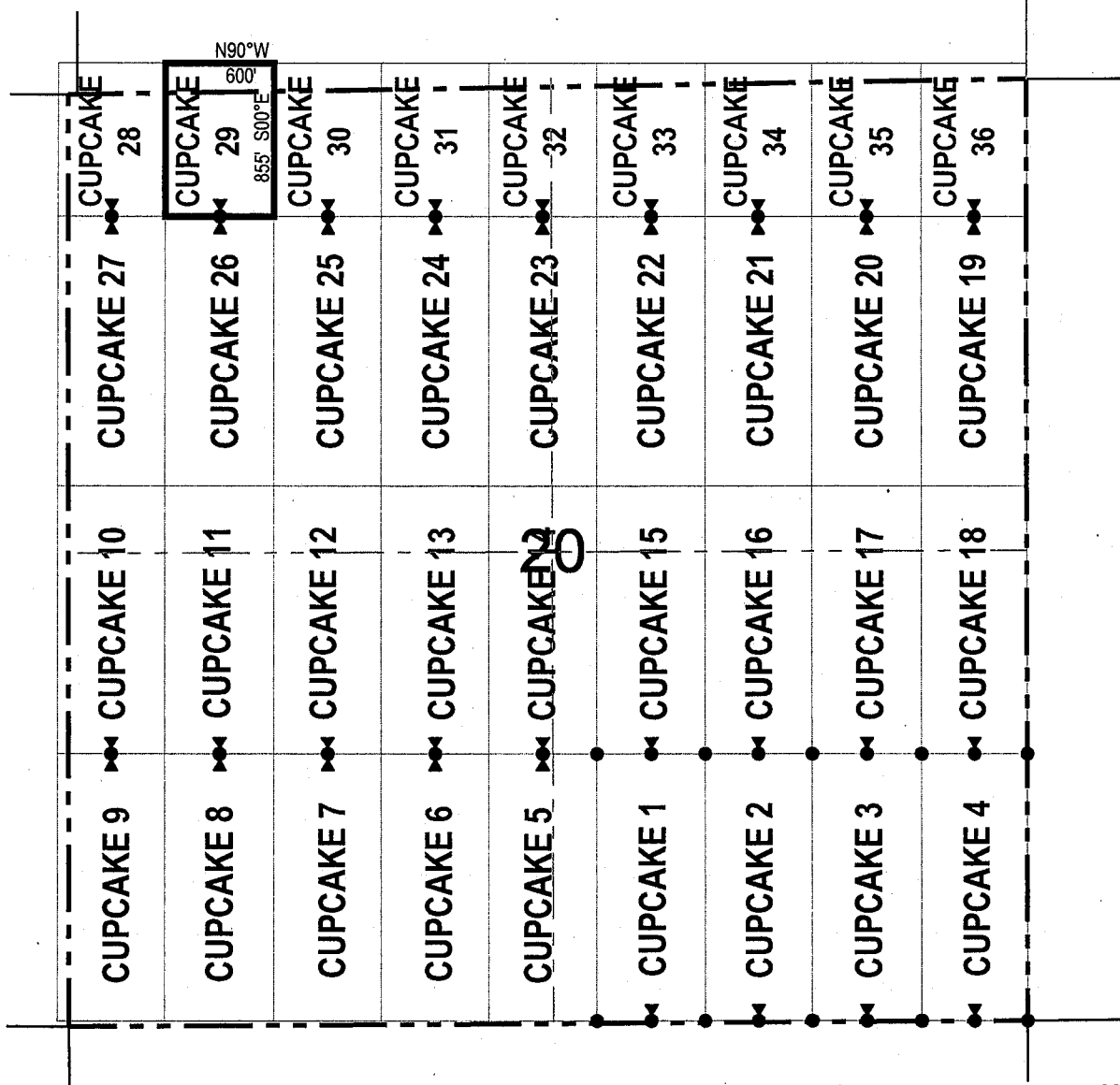


● Corner Posts ▲ Location Monuments Scale: 1"=1000'



1. The above map depicts the **CUPCAKE 28** Lode Claim, NW 1/4 of the NW 1/4 of Section 20, Township 2 South, Range 14 East, Gila & Salt River Base and Meridian, Gila County, Arizona, Mineral Creek Mining District.
2. The type of corner and location monuments used are wood 2"x2"x48" posts and metal tags with location information written thereon.
3. The bearings and distances in degrees and feet between claim corners are as depicted on the above map.

LODE CLAIM LOCATION MAP



● Corner Posts ▲ Location Monuments Scale: 1"=1000'



1. The above map depicts the **CUPCAKE 29** Lode Claim, NW 1/4 of the NW 1/4 of Section 20, Township 2 South, Range 14 East, Gila & Salt River Base and Meridian, Gila County, Arizona, Mineral Creek Mining District.
2. The type of corner and location monuments used are wood 2"x2"x48" posts and metal tags with location information written thereon.
3. The bearings and distances in degrees and feet between claim corners are as depicted on the above map.

When recorded return to:
 Resolution Copper Mining LLC
 P.O. Box 1944
 Superior, AZ 85723

LOCATION NOTICE FOR LODE MINING CLAIM

NOTICE IS HEREBY GIVEN that the CUPCAKE 30
 _____ lode mining claim has been located
 by Resolution Copper Mining LLC whose current mailing
 address is P.O. Box 1944
Superior AZ 85273

RECEIVED
 BLM AZ STATE OFFICE
 2019 OCT 22 A 11:57
 PHOENIX, ARIZONA

The general course of this claim is north / south and it is situated in Gila
 County, Arizona. This claim is 855 feet in length and 600 feet in width. This claim runs
 from the location monument on which this location notice is posted approximately 845 feet in a
northerly direction to the north end line and 10 feet in a southerly direction to the
south end line. This claim is marked by six monuments, one at each corner and one at the center of each
 end line of the claim.

The location monument on which this notice is posted is situated within Section 20, Township 2
South, Range 14 East, Gila Salt River Base and Meridian, Arizona and this claim encompasses portions
 of the following quarter section (s), section (s), Township (s) and Range (s) NE 1/4 and NW 1/4 of the NW 1/4 of
Section 20, Township 2 South, Range 14 East, Gila & Salt River Base and Meridian, Gila County, Arizona, Mineral Creek
Mining District.

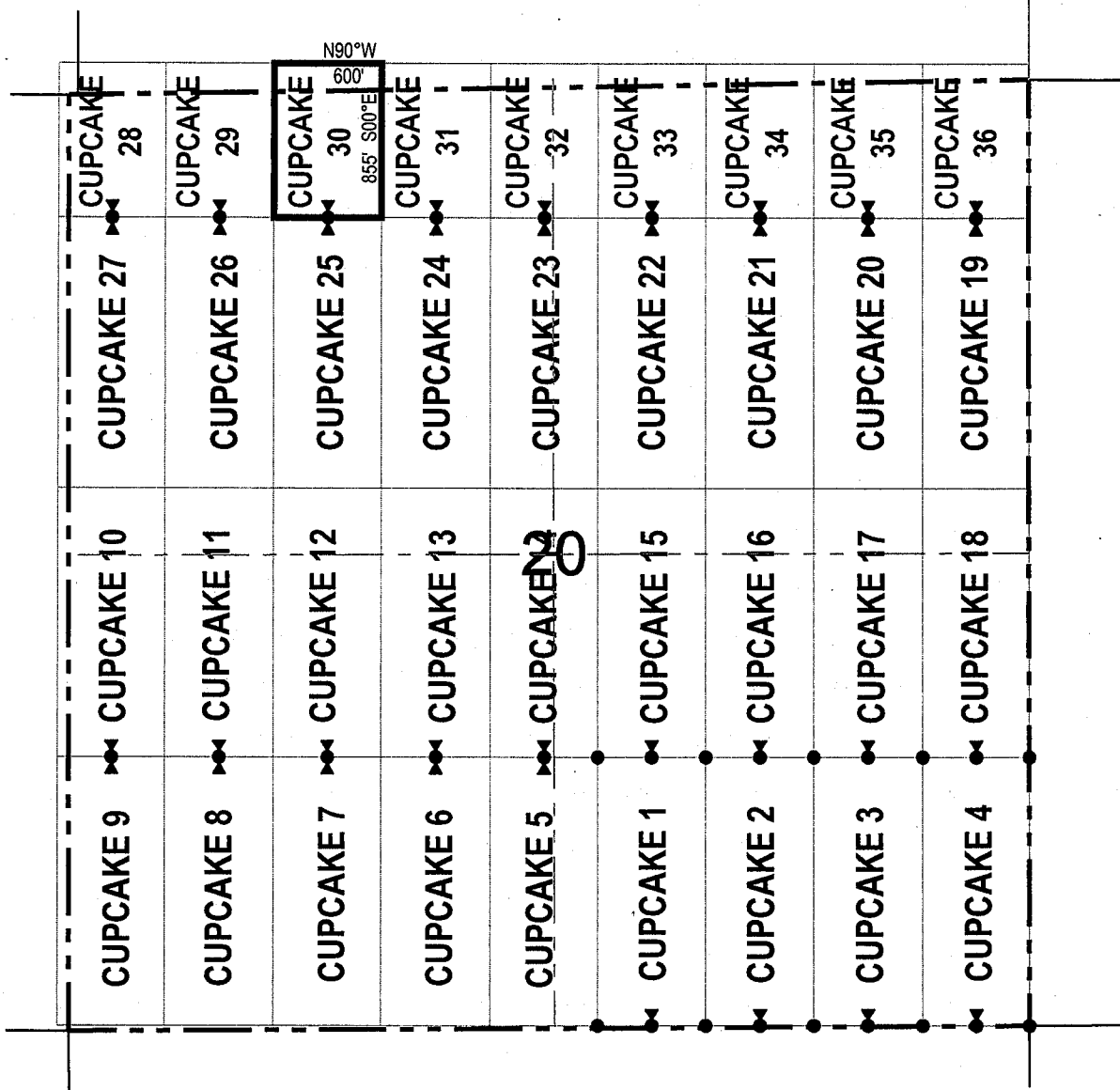
The locality of this claim with reference to some natural object or permanent monument and additional information
 (if any) concerning its locality are as follows: 5355 feet north and 3600 feet west of the southeast corner of
Section 20, Township 2 South, Range 14 East, to the northeast corner of the claim.

DATED AND POSTED on the ground this 16 day of September, 2019

LOCATOR (s) Resolution Copper Mining LLC AGENT: T. Robert Breen / 
P.O. Box 1944
Superior, Arizona 85273

AMC 458023

LODE CLAIM LOCATION MAP



● Corner Posts ▲ Location Monuments Scale: 1"=1000'



1. The above map depicts the **CUPCAKE 30** Lode Claim, NE 1/4 and NW 1/4 of the NW 1/4 of Section 20, Township 2 South, Range 14 East, Gila & Salt River Base and Meridian, Gila County, Arizona, Mineral Creek Mining District.
2. The type of corner and location monuments used are wood 2"x2"x48" posts and metal tags with location information written thereon.
3. The bearings and distances in degrees and feet between claim corners are as depicted on the above map.

When recorded return to:
Resolution Copper Mining LLC
P.O. Box 1944
Superior, AZ 85723

LOCATION NOTICE FOR LODE MINING CLAIM


NOTICE IS HEREBY GIVEN that the CUPCAKE 31
 lode mining claim has been located
by Resolution Copper Mining LLC whose current mailing
address is P.O. Box 1944
Superior AZ 85273

RECEIVED
DMM AZ STATE OFFICE
PHOENIX, ARIZONA
OCT 22 A 11:57

The general course of this claim is north / south and it is situated in Gila
County, Arizona. This claim is 855 feet in length and 600 feet in width. This claim runs
from the location monument on which this location notice is posted approximately 845 feet in a
northerly direction to the north end line and 10 feet in a southerly direction to the
south end line. This claim is marked by six monuments, one at each corner and one at the center of each
end line of the claim.

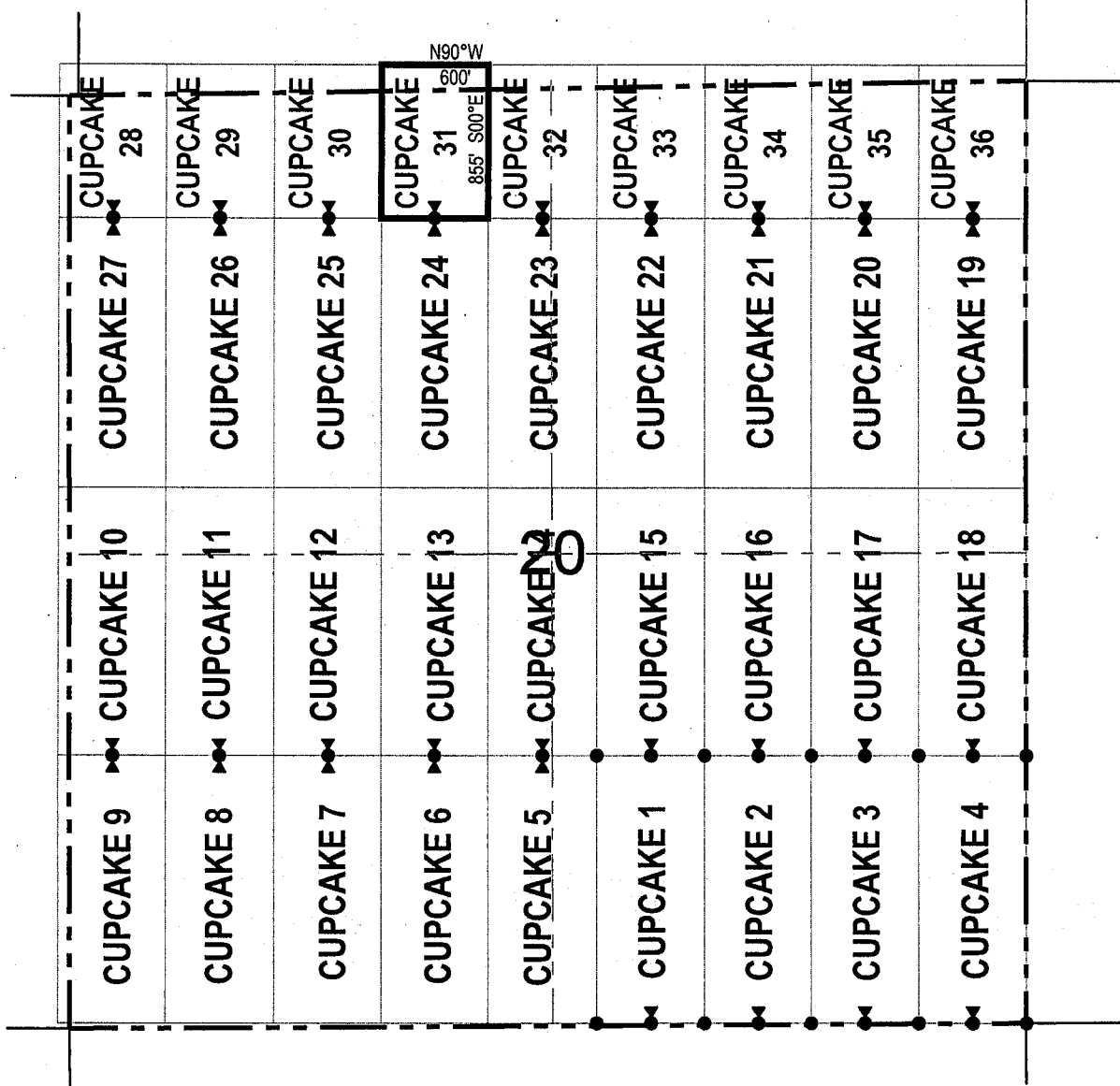
The location monument on which this notice is posted is situated within Section 20, Township 2
South, Range 14 East, Gila Salt River Base and Meridian, Arizona and this claim encompasses portions
of the following quarter section (s), section (s), Township (s) and Range (s) NE 1/4 of the NW 1/4 of Section 20,
Township 2 South, Range 14 East, Gila & Salt River Base and Meridian, Gila County, Arizona, Mineral Creek Mining
District.

The locality of this claim with reference to some natural object or permanent monument and additional information
(if any) concerning its locality are as follows: 5355 feet north and 3000 feet west of the southeast corner of
Section 20, Township 2 South, Range 14 East, to the northeast corner of the claim.

DATED AND POSTED on the ground this 16 day of September, 20 19
LOCATOR (s) Resolution Copper Mining LLC AGENT: T. Robert Breen / 
P.O. Box 1944
Superior, Arizona 85273

AMC458024

LODE CLAIM LOCATION MAP



● Corner Posts ▲ Location Monuments Scale: 1"=1000'

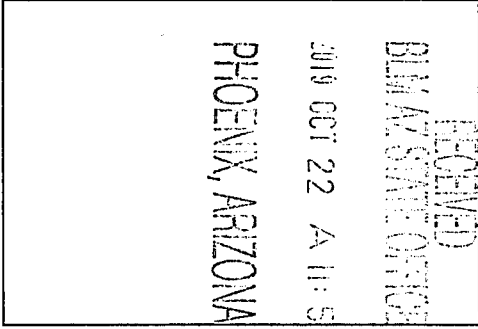


1. The above map depicts the **CUPCAKE 31** Lode Claim, NE 1/4 of the NW 1/4 of Section 20, Township 2 South, Range 14 East, Gila & Salt River Base and Meridian, Gila County, Arizona, Mineral Creek Mining District.
2. The type of corner and location monuments used are wood 2"x2"x48" posts and metal tags with location information written thereon.
3. The bearings and distances in degrees and feet between claim corners are as depicted on the above map.

When recorded return to:
 Resolution Copper Mining LLC
 P.O. Box 1944
 Superior, AZ 85723

LOCATION NOTICE FOR LODE MINING CLAIM

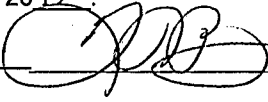
NOTICE IS HEREBY GIVEN that the CUPCAKE 32
 _____ lode mining claim has been located
 by Resolution Copper Mining LLC whose current mailing
 address is P.O. Box 1944
Superior AZ 85273



The general course of this claim is north / south and it is situated in Gila
 County, Arizona. This claim is 855 feet in length and 600 feet in width. This claim runs
 from the location monument on which this location notice is posted approximately 845 feet in a
northerly direction to the north end line and 10 feet in a southerly direction to the
south end line. This claim is marked by six monuments, one at each corner and one at the center of each
 end line of the claim.

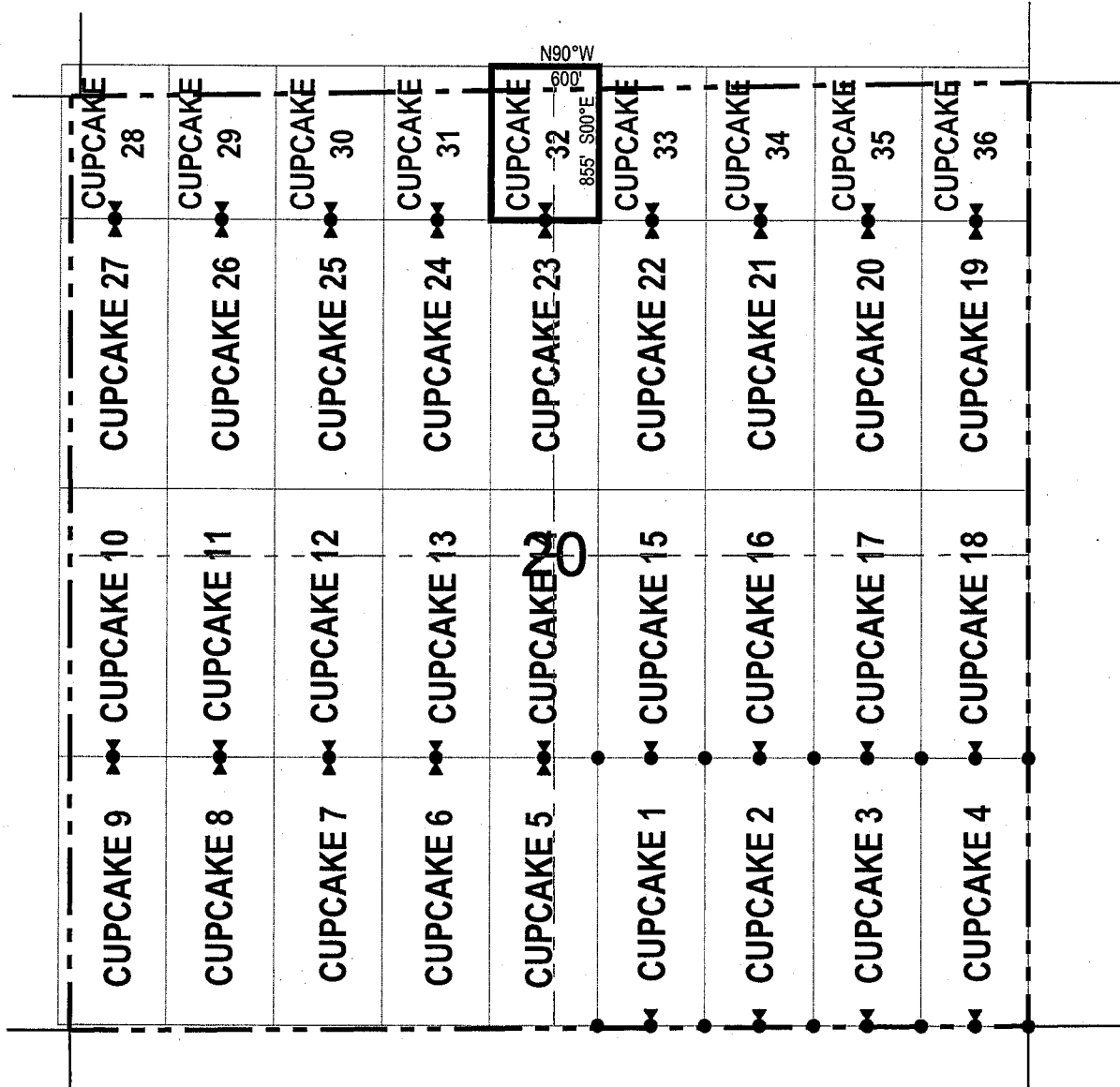
The location monument on which this notice is posted is situated within Section 20, Township 2
South, Range 14 East, Gila Salt River Base and Meridian, Arizona and this claim encompasses portions
 of the following quarter section (s), section (s), Township (s) and Range (s) NE 1/4 of the NW 1/4 and NW 1/4 of
the NE 1/4 of Section 20, Township 2 South, Range 14 East, Gila & Salt River Base and Meridian, Gila County, Arizona,
Mineral Creek Mining District.

The locality of this claim with reference to some natural object or permanent monument and additional information
 (if any) concerning its locality are as follows: 5355 feet north and 2400 feet west of the southeast corner of
Section 20, Township 2 South, Range 14 East, to the northeast corner of the claim.

DATED AND POSTED on the ground this 16 day of September, 20 19
 LOCATOR (s) Resolution Copper Mining LLC AGENT: T. Robert Breen / 
P.O. Box 1944
Superior, Arizona 85273

AMC458025

LODE CLAIM LOCATION MAP



● Corner Posts ▲ Location Monuments Scale: 1"=1000'

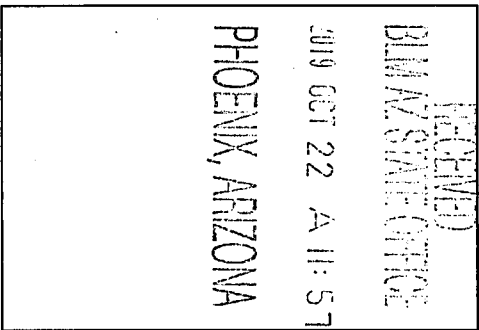


1. The above map depicts the **CUPCAKE 32** Lode Claim, NE 1/4 of the NW 1/4 and NW 1/4 of the NE 1/4 of Section 20, Township 2 South, Range 14 East, Gila & Salt River Base and Meridian, Gila County, Arizona, Mineral Creek Mining District.
2. The type of corner and location monuments used are wood 2"x2"x48" posts and metal tags with location information written thereon.
3. The bearings and distances in degrees and feet between claim corners are as depicted on the above map.

When recorded return to:
 Resolution Copper Mining LLC
 P.O. Box 1944
 Superior, AZ 85723

LOCATION NOTICE FOR LODE MINING CLAIM

NOTICE IS HEREBY GIVEN that the CUPCAKE 33
 lode mining claim has been located
 by Resolution Copper Mining LLC whose current mailing
 address is P.O. Box 1944
Superior AZ 85273



The general course of this claim is north / south and it is situated in Gila
 County, Arizona. This claim is 855 feet in length and 600 feet in width. This claim runs
 from the location monument on which this location notice is posted approximately 845 feet in a
northerly direction to the north end line and 10 feet in a southerly direction to the
south end line. This claim is marked by six monuments, one at each corner and one at the center of each
 end line of the claim.

The location monument on which this notice is posted is situated within Section 20, Township 2
South, Range 14 East, Gila Salt River Base and Meridian, Arizona and this claim encompasses portions
 of the following quarter section (s), section (s), Township (s) and Range (s) NW 1/4 of the NE 1/4 of Section 20,
Township 2 South, Range 14 East, Gila & Salt River Base and Meridian, Gila County, Arizona, Mineral Creek Mining
District.

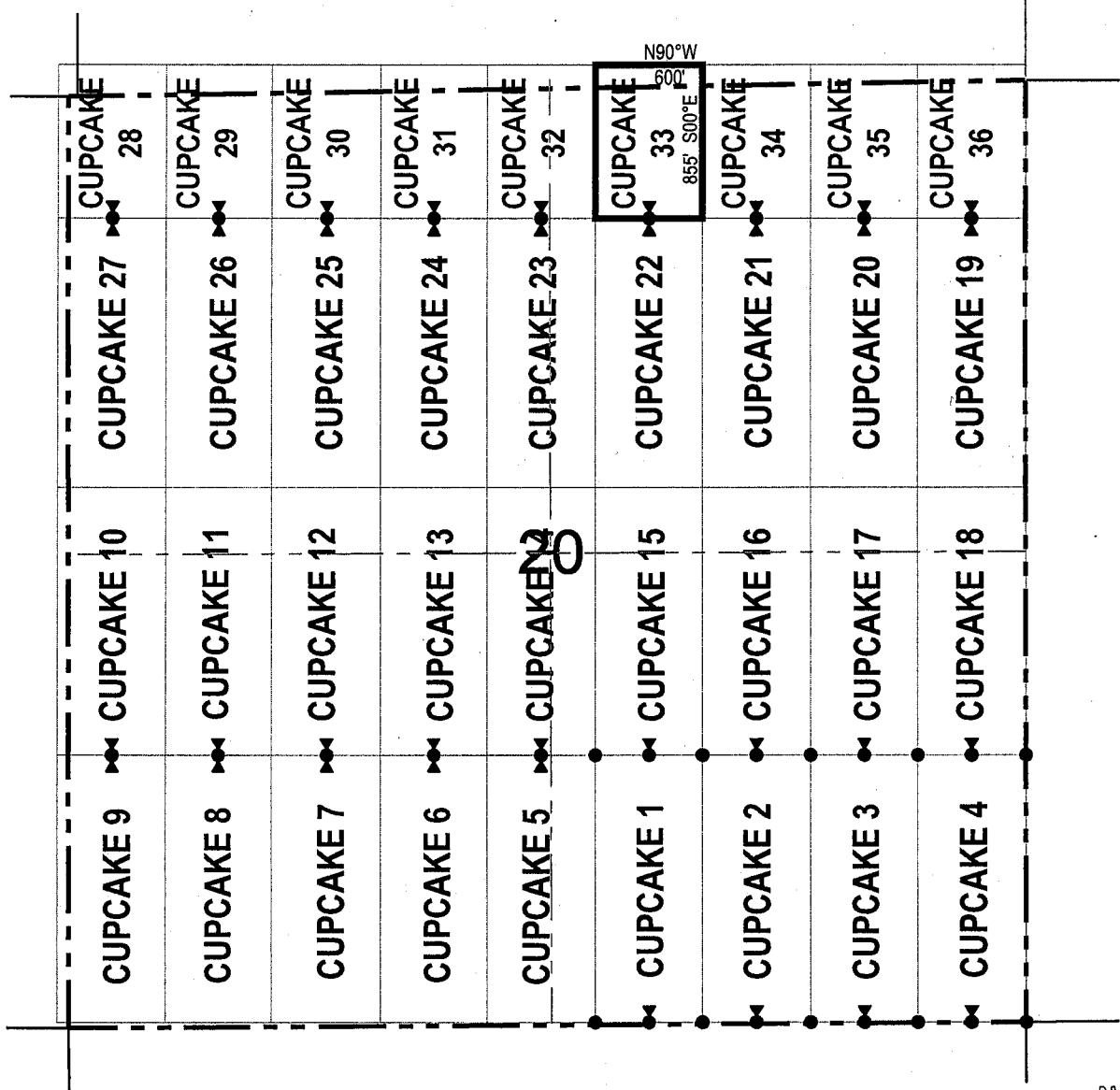
The locality of this claim with reference to some natural object or permanent monument and additional information
 (if any) concerning its locality are as follows: 5355 feet north and 1800 feet west of the southeast corner of
Section 20, Township 2 South, Range 14 East, to the northeast corner of the claim.

DATED AND POSTED on the ground this 16 day of September, 2019

LOCATOR (s) Resolution Copper Mining LLC AGENT: T. Robert Breen / 
P.O. Box 1944
Superior, Arizona 85273

AMC458026

LODE CLAIM LOCATION MAP



● Corner Posts ▲ Location Monuments Scale: 1"=1000'



1. The above map depicts the **CUPCAKE 33** Lode Claim, NW 1/4 of the NE 1/4 of Section 20, Township 2 South, Range 14 East, Gila & Salt River Base and Meridian, Gila County, Arizona, Mineral Creek Mining District.
2. The type of corner and location monuments used are wood 2"x2"x48" posts and metal tags with location information written thereon.
3. The bearings and distances in degrees and feet between claim corners are as depicted on the above map.

When recorded return to:
 Resolution Copper Mining LLC
 P.O. Box 1944
 Superior, AZ 85723

LOCATION NOTICE FOR LODE MINING CLAIM


NOTICE IS HEREBY GIVEN that the CUPCAKE 34
 _____ lode mining claim has been located
 by Resolution Copper Mining LLC whose current mailing
 address is P.O. Box 1944
Superior AZ 85273

RECEIVED
 GIL A Z STATE OFFICE
 2019 OCT 22 A 11:57
 PHOENIX, ARIZONA

The general course of this claim is north / south and it is situated in Gila
 County, Arizona. This claim is 855 feet in length and 600 feet in width. This claim runs
 from the location monument on which this location notice is posted approximately 845 feet in a
northerly direction to the north end line and 10 feet in a southerly direction to the
south end line. This claim is marked by six monuments, one at each corner and one at the center of each
 end line of the claim.

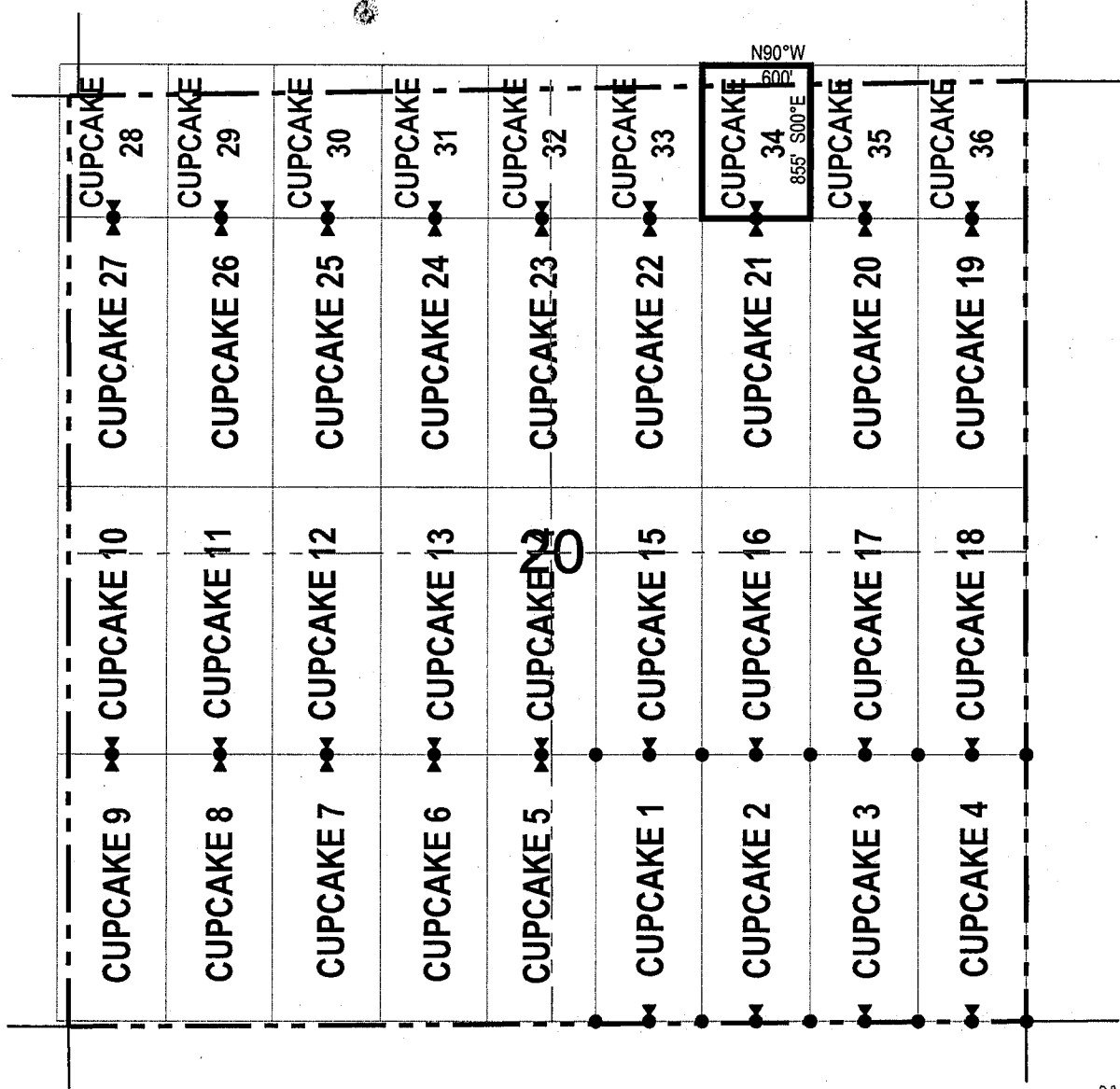
The location monument on which this notice is posted is situated within Section 20, Township 2
South, Range 14 East, Gila Salt River Base and Meridian, Arizona and this claim encompasses portions
 of the following quarter section (s), section (s), Township (s) and Range (s) NW 1/4 and NE 1/4 of the NE 1/4 of
Section 20, Township 2 South, Range 14 East, Gila & Salt River Base and Meridian, Gila County, Arizona, Mineral Creek
Mining District.

The locality of this claim with reference to some natural object or permanent monument and additional information
 (if any) concerning its locality are as follows: 5355 feet north and 1200 feet west of the southeast corner of
Section 20, Township 2 South, Range 14 East, to the northeast corner of the claim.

DATED AND POSTED on the ground this 16 day of September, 2019
 LOCATOR (s) Resolution Copper Mining LLC AGENT: T. Robert Breen / 
P.O. Box 1944
Superior, Arizona 85273

AMC 458027

LODE CLAIM LOCATION MAP



● Corner Posts ▲ Location Monuments Scale: 1"=1000'

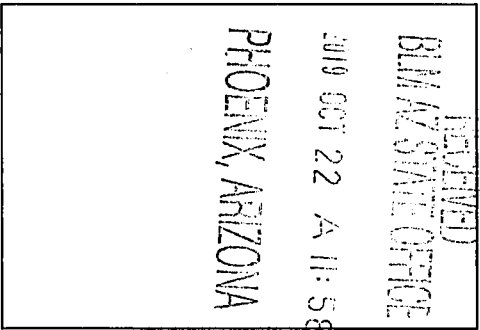


1. The above map depicts the **CUPCAKE 34** Lode Claim, NW 1/4 and NE 1/4 of the NE 1/4 of Section 20, Township 2 South, Range 14 East, Gila & Salt River Base and Meridian, Gila County, Arizona, Mineral Creek Mining District.
2. The type of corner and location monuments used are wood 2"x2"x48" posts and metal tags with location information written thereon.
3. The bearings and distances in degrees and feet between claim corners are as depicted on the above map.

When recorded return to:
 Resolution Copper Mining LLC
 P.O. Box 1944
 Superior, AZ 85723

LOCATION NOTICE FOR LODE MINING CLAIM


NOTICE IS HEREBY GIVEN that the CUPCAKE 35
 _____ lode mining claim has been located
 by Resolution Copper Mining LLC whose current mailing
 address is P.O. Box 1944
Superior AZ 85273



The general course of this claim is north / south and it is situated in Gila
 County, Arizona. This claim is 855 feet in length and 600 feet in width. This claim runs
 from the location monument on which this location notice is posted approximately 845 feet in a
northerly direction to the north end line and 10 feet in a southerly direction to the
south end line. This claim is marked by six monuments, one at each corner and one at the center of each
 end line of the claim.

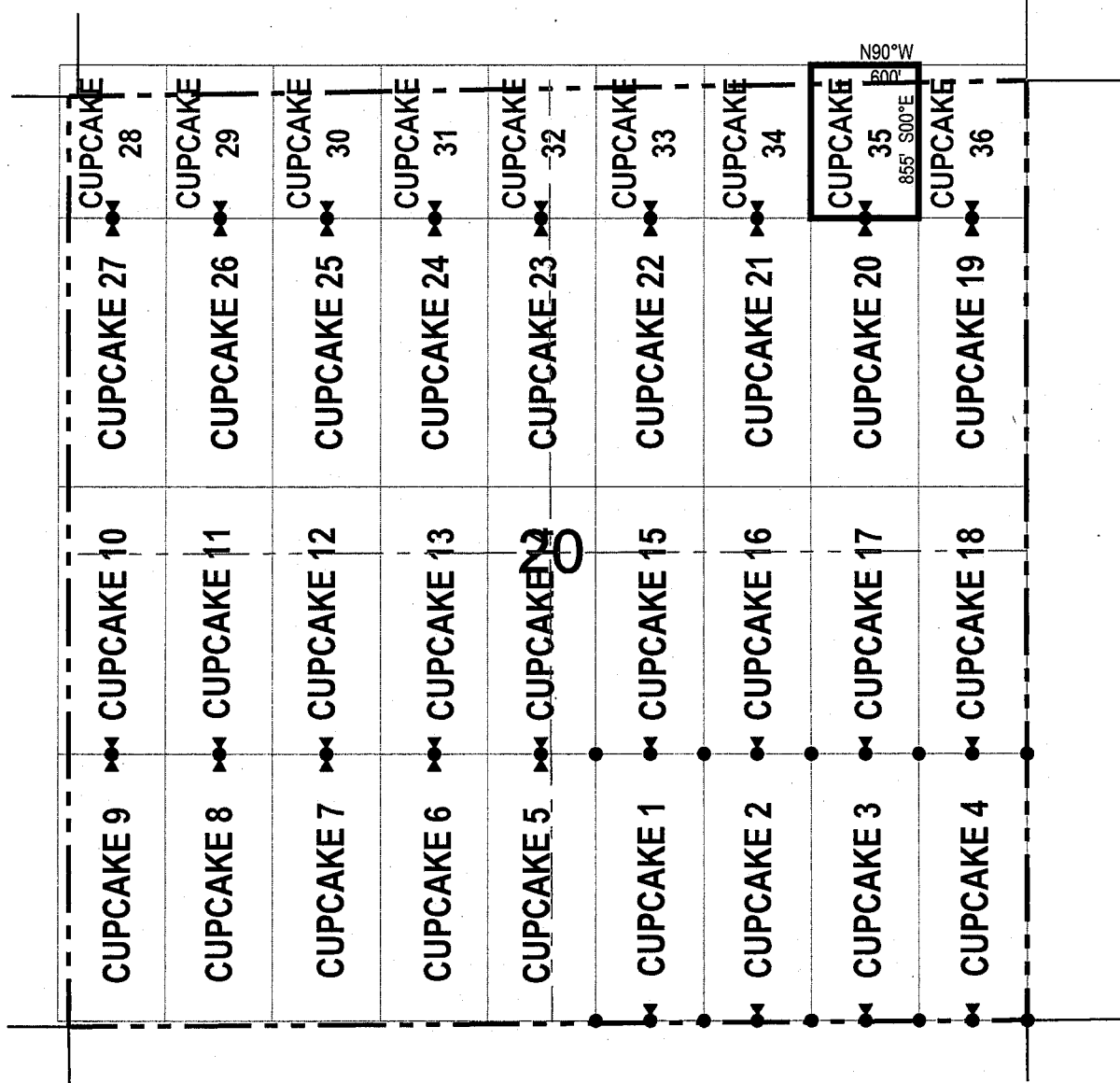
The location monument on which this notice is posted is situated within Section 20, Township 2
South, Range 14 East, Gila Salt River Base and Meridian, Arizona and this claim encompasses portions
 of the following quarter section (s), section (s), Township (s) and Range (s) NE 1/4 of the NE 1/4 of Section 20,
Township 2 South, Range 14 East, Gila & Salt River Base and Meridian, Gila County, Arizona, Mineral Creek Mining
District.

The locality of this claim with reference to some natural object or permanent monument and additional information
 (if any) concerning its locality are as follows: 5355 feet north and 600 feet west of the southeast corner of Section
20, Township 2 South, Range 14 East, to the northeast corner of the claim.

DATED AND POSTED on the ground this 16 day of September, 2019
 LOCATOR (s) Resolution Copper Mining LLC AGENT: T. Robert Breen / 
P.O. Box 1944
Superior, Arizona 85273

AMC 458028

LODE CLAIM LOCATION MAP



● Corner Posts ▲ Location Monuments Scale: 1"=1000'



1. The above map depicts the **CUPCAKE 35** Lode Claim, NE 1/4 of the NE 1/4 of Section 20, Township 2 South, Range 14 East, Gila & Salt River Base and Meridian, Gila County, Arizona, Mineral Creek Mining District.
2. The type of corner and location monuments used are wood 2"x2"x48" posts and metal tags with location information written thereon.
3. The bearings and distances in degrees and feet between claim corners are as depicted on the above map.

When recorded return to:

Resolution Copper Mining LLC
P.O. Box 1944
Superior, AZ 85723

LOCATION NOTICE FOR LODE MINING CLAIM


NOTICE IS HEREBY GIVEN that the CUPCAKE 36
lode mining claim has been located
by Resolution Copper Mining LLC whose current mailing
address is P.O. Box 1944
Superior AZ 85273

RECEIVED
BLM/AZ STATE OFFICE
PHOENIX, ARIZONA
OCT 22 A 11:58

The general course of this claim is north / south and it is situated in Gila
County, Arizona. This claim is 855 feet in length and 600 feet in width. This claim runs
from the location monument on which this location notice is posted approximately 845 feet in a
northerly direction to the north end line and 10 feet in a southerly direction to the
south end line. This claim is marked by six monuments, one at each corner and one at the center of each
end line of the claim.

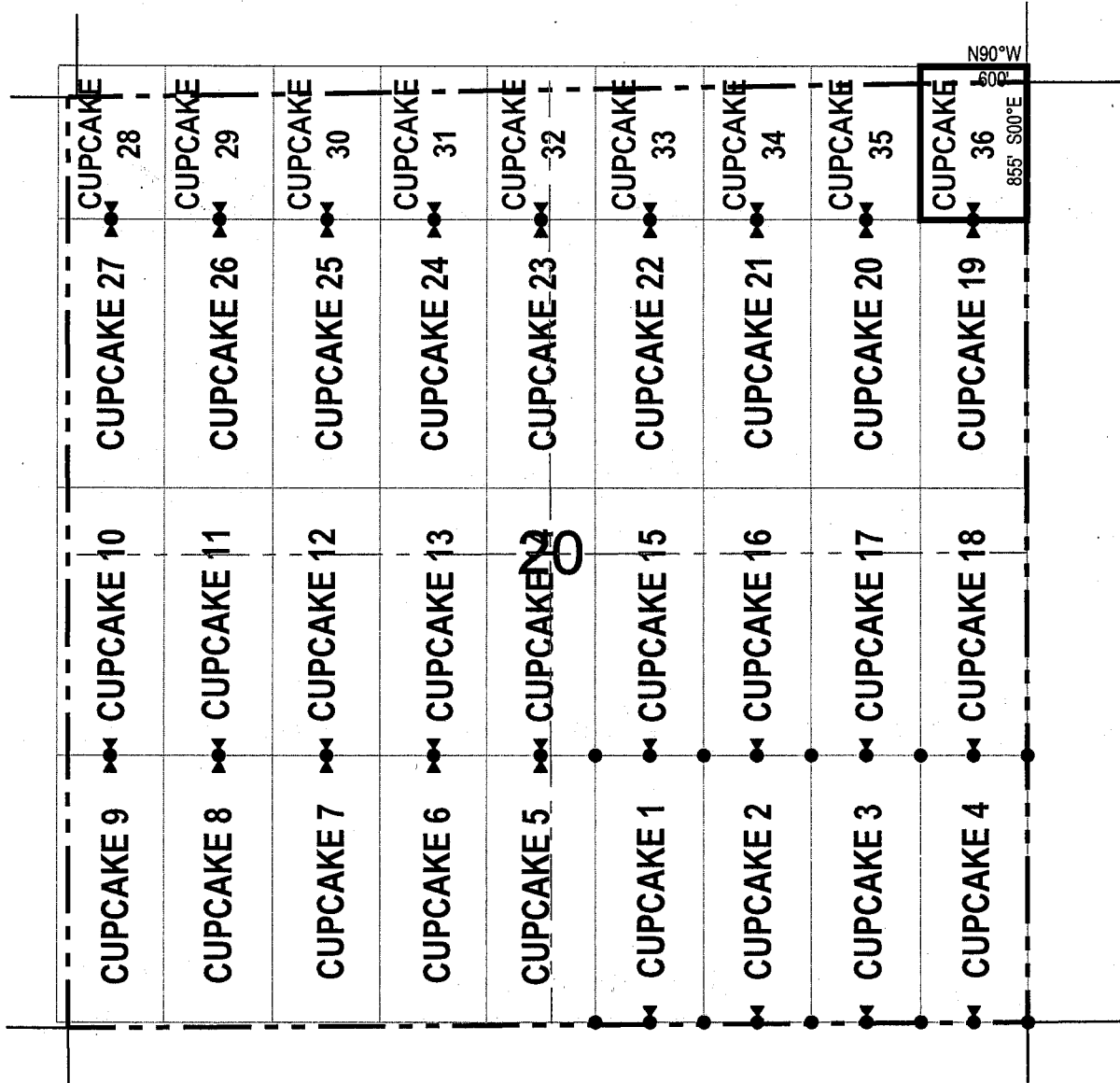
The location monument on which this notice is posted is situated within Section 20, Township 2
South, Range 14 East, Gila Salt River Base and Meridian, Arizona and this claim encompasses portions
of the following quarter section (s), section (s), Township (s) and Range (s) NE 1/4 of the NE 1/4 of Section 20,
Township 2 South, Range 14 East, Gila & Salt River Base and Meridian, Gila County, Arizona, Mineral Creek Mining
District.

The locality of this claim with reference to some natural object or permanent monument and additional information
(if any) concerning its locality are as follows: 5355 feet north and 0 feet west of the southeast corner of Section
20, Township 2 South, Range 14 East, to the northeast corner of the claim.

DATED AND POSTED on the ground this 16 day of September, 2019
LOCATOR (s) Resolution Copper Mining LLC AGENT: T. Robert Breen / 
P.O. Box 1944
Superior, Arizona 85273

AMC458029

LODE CLAIM LOCATION MAP



● Corner Posts ▲ Location Monuments Scale: 1"=1000'



1. The above map depicts the **CUPCAKE 36** Lode Claim, NE 1/4 of the NE 1/4 of Section 20, Township 2 South, Range 14 East, Gila & Salt River Base and Meridian, Gila County, Arizona, Mineral Creek Mining District.
2. The type of corner and location monuments used are wood 2"x2"x48" posts and metal tags with location information written thereon.
3. The bearings and distances in degrees and feet between claim corners are as depicted on the above map.



LR2000 Internal

CR Geographic Report with Land

Download User Guide (pdf)

Purpose: This report produces a geographic listing of case information based on retrieval by Meridian/Township/Range. This report format will display the case type, case disposition, meridian, township, range, section, survey type, survey number, surface management agency, pending actions, serial number, and total case acres.

To refresh the query, do a **Ctrl-R**. It resets the page and clears any criteria fields that may have entries.



No Results

The specified criteria didn't result in any data. This is often caused by applying filters and/or selection steps that are too restrictive or that contain incorrect values. Please check your analysis filters and selection steps, and try again. The filters or selection steps currently being applied are shown below.

Filters

Disposition is equal to **AUTHORIZED, CANCELLED, EXPIRED, PENDING, REJECTED, RELINQUISHED, WITHDRAWN**

and Meridian Township Range Section is equal to **14 0020S 0140E 020**

and Admin State is equal to **AZ**

